

PURE
[pyoo r]

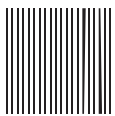
adjective, purer, purest.

free from anything of a different, inferior, or contaminating kind; free from extraneous matter; unmodified by an admixture; simple or homogeneous. free from foreign or inappropriate elements.

Synonyms

unmixed, unadulterated, unalloyed, uncontaminated, untainted, unstained, undefiled, untarnished, immaculate, unpoluted, uncorrupted.

PAVIGRÉS[®]
GRUPO



FERI & MASI
PUREVER TILES





UNIQUE NATIVE 89X89cm + STAINLESS STEEL FIXING KIT
[BÉTON SMART]

COASTLAND WHITE 89X89cm
[HAMMERED EFFECT R12C]

Feri & Masi, is a Portuguese brand of Pavigrés Group, specialized in the manufacture of porcelain tiles with an outstanding know-how in unglazed double-loaded products.

Worldwide present, the Pavigrés Group is proud of its quality heritage and focus on what is truly essential: simplicity and beauty.

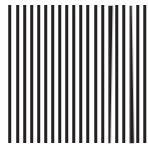
In the PURE catalogue we present four Architectural Collections, offering completely unglazed porcelain tiles made by a unique full body, double and triple-loading process with hyper granulometric reduction. The PURE products are the nature in its purest state and are proudly made to bring us back to basics, back to the material.

Feri & Masi é uma marca portuguesa do Grupo Pavigrés, especializada na produção de pavimento e revestimento em grés porcelânico. Temos um extraordinário know-how na fabricação de produtos não esmaltados feitos com recurso à tecnologia de dupla-carga.

Presente em todo mundo, o Grupo Pavigrés orgulha-se na elevada qualidade que lhe é reconhecida e trabalha diariamente focada no que é verdadeiramente essencial: simplicidade e beleza.

No catálogo PURE apresentamos quatro coleções de arquitetura, constituídas por produtos não esmaltados, fabricados com recurso a um singular processo de toda a massa, dupla e tripla-carga com hiper redução granulométrica. Os produtos PURE oferecem-nos a natureza no seu estado mais puro. Conduzem-nos de volta à gênese, de volta à matéria.

PAVIGRÉS[®]
GRUPO



FERI & MASI
PUREVER TILES

COASTLAND	07
UNIQUE	33
GRANITY AIR	59
SOLID	91
COEXISTENCE	109
MODULARITY	116
SHADE VARIATION	116
REFERENCE PROJECTS	117



COASTLAND WHITE 59,7x59,7cm
[HAMMERED EFFECT R12C]

COASTLAND BLACK 59,7x59,7cm
[MATT R10B]

COASTLANDCOLLECTION

5 COLORS
4 SIZES
2 SURFACES

Coastland is an impressive Collection inspired in the most beautiful seashores. With Nature in mind, we build a color palette matching the most remarkable worldwide beaches, from the volcanic black sands to the pure white shores of the Pacific.

Coastland is a sophisticated technical porcelain tile of complex engineering. Its architecture took us some years of development pairing it with the most recent technologies and research.

Coastland is now a flawless product, suitable for all areas and highly endorsed for high traffic places due to its superb technical performance.

Presented in two distinct surfaces, Coastland is unveiled in four different sizes and five Nature based colors.

Coastland é uma colecção impressionante inspirada nas mais belas costas marítimas. Com o foco na Natureza, construímos uma paleta de cores que corresponde às mais belas praias do mundo onde se encontram desde as areias negras de origem vulcânica até às margens puramente brancas do Pacífico.

Coastland é um porcelânico técnico sofisticado de engenharia complexa. A sua arquitectura levou-nos alguns anos de desenvolvimento, associando-o às mais recentes tecnologias e investigação.

Coastland é agora um produto notável, adequado para todas as áreas mas altamente recomendado para locais de elevado tráfego devido ao seu soberbo desempenho técnico.

Apresentado em duas superfícies distintas, Coastland revela-se em quatro formatos diferentes e cinco cores baseadas na Natureza.

COASTLANDSURFACES

MATT R10B

HAMMERED EFFECT R12C



COASTLAND GREIGE 59,7x119cm
[MATT RIOB]

COASTLANDCOLLECTION



COASTLAND GREIGE 59,7x119cm
[MATT RIOB]

COASTLANDBLACK

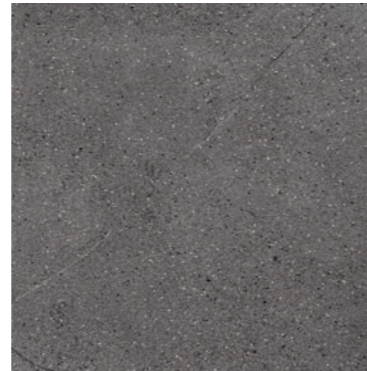
10,5mm

59,7X119cm 24"X47"



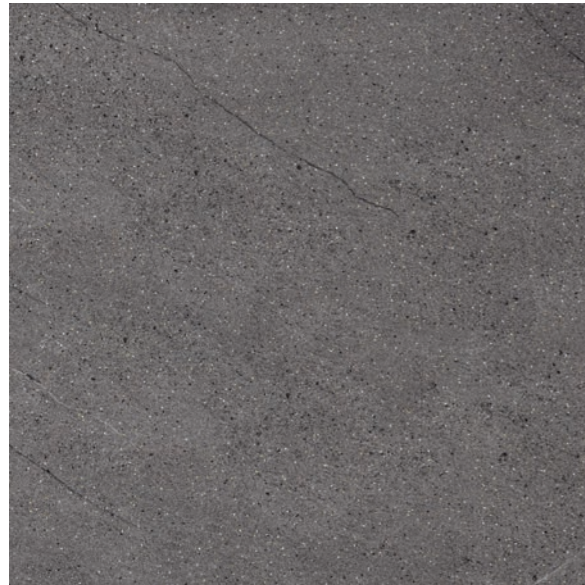
MATT | MATE [R10B] - FM3173MT
HAMMERED EFFECT | BOUCHARDÉ | BUJARDADO [R12C] - FM3177EF

59,7X59,7cm 24"X24"



MATT | MATE [R10B] - FM3174MT
HAMMERED EFFECT | BOUCHARDÉ | BUJARDADO [R12C] - FM3178EF

89X89cm 35"X35"



MATT | MATE [R10B] - FM3172MT
HAMMERED EFFECT | BOUCHARDÉ | BUJARDADO [R12C] - FM3176EF

29,7X59,7cm 12"X24"



MATT | MATE [R10B] - FM3175MT
HAMMERED EFFECT | BOUCHARDÉ | BUJARDADO [R12C] - FM3179EF

COASTLANDGREIGE

10,5mm

59,7X119cm 24"X47"



MATT | MATE [R10B] - FM3181MT
HAMMERED EFFECT | BOUCHARDÉ | BUJARDADO [R12C] - FM3185EF

59,7X59,7cm 24"X24"



MATT | MATE [R10B] - FM3182MT
HAMMERED EFFECT | BOUCHARDÉ | BUJARDADO [R12C] - FM3186EF

29,7X59,7cm 12"X24"

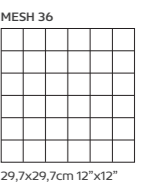
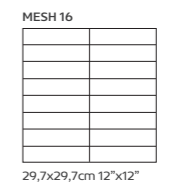
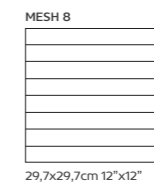
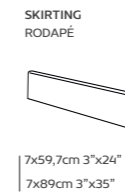
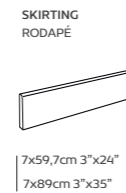
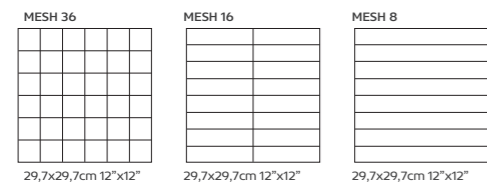


MATT | MATE [R10B] - FM3183MT
HAMMERED EFFECT | BOUCHARDÉ | BUJARDADO [R12C] - FM3187EF

89X89cm 35"X35"



MATT | MATE [R10B] - FM3180MT
HAMMERED EFFECT | BOUCHARDÉ | BUJARDADO [R12C] - FM3184EF



COASTLANDCOLLECTION



COASTLAND BEIGE 89X89cm
[MATT.R10B]



COASTLANDWHITE

10,5mm

59,7X119cm 24"X47"



MATT | MATE [R10B] - FM3189MT
HAMMERED EFFECT | BOUCHARDÉ | BUJARDADO [R12C] - FM3193EF

89X89cm 35"X35"



MATT | MATE [R10B] - FM3188MT
HAMMERED EFFECT | BOUCHARDÉ | BUJARDADO [R12C] - FM3192EF

59,7X59,7cm 24"X24"



MATT | MATE [R10B] - FM3190MT
HAMMERED EFFECT | BOUCHARDÉ | BUJARDADO [R12C] - FM3194EF

29,7X59,7cm 12"X24"



MATT | MATE [R10B] - FM3191MT
HAMMERED EFFECT | BOUCHARDÉ | BUJARDADO [R12C] - FM3195EF

59,7X59,7cm 24"X24"



MATT | MATE [R10B] - FM3166MT
HAMMERED EFFECT | BOUCHARDÉ | BUJARDADO [R12C] - FM3170EF

29,7X59,7cm 12"X24"



MATT | MATE [R10B] - FM3167MT
HAMMERED EFFECT | BOUCHARDÉ | BUJARDADO [R12C] - FM3171EF

59,7X119cm 24"X47"

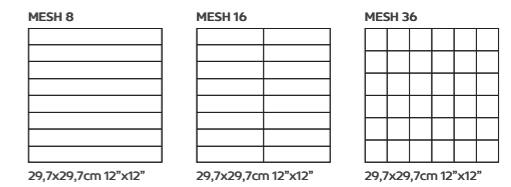
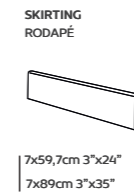
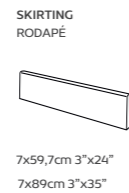
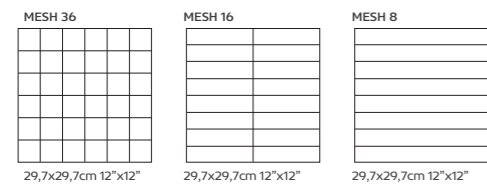


MATT | MATE [R10B] - FM3165MT
HAMMERED EFFECT | BOUCHARDÉ | BUJARDADO [R12C] - FM3169EF

89X89cm 35"X35"



MATT | MATE [R10B] - FM3164MT
HAMMERED EFFECT | BOUCHARDÉ | BUJARDADO [R12C] - FM3168EF



COASTLANDBEIGE

10,5mm



COASTLAND WHITE 59,7X59,7cm
[MATT RIOB]



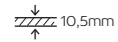
COASTLAND WHITE 59,7x59,7cm
[HAMMERED EFFECT R12C]

COASTLAND WHITE 59,7x59,7cm
[MATT R10B]





COASTLANDKHAKI



59,7X119cm 24"x47"



MATT | MATE [R10B] - FM3154MT
HAMMERED EFFECT | BOUCHARDÉ | BUJARDADO [R12C] - FM3157EF

89X89cm 35"x35"



MATT | MATE [R10B] - FM3148MT
HAMMERED EFFECT | BOUCHARDÉ | BUJARDADO [R12C] - FM3160EF

59,7X59,7cm 24"x24"

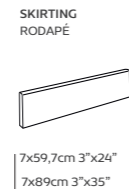
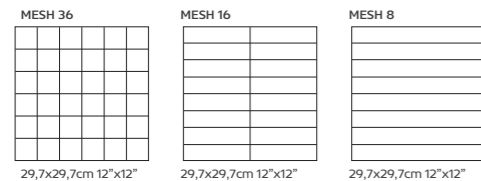


MATT | MATE [R10B] - FM3155MT
HAMMERED EFFECT | BOUCHARDÉ | BUJARDADO [R12C] - FM3158EF

29,7X59,7cm 12"x24"



MATT | MATE [R10B] - FM3156MT
HAMMERED EFFECT | BOUCHARDÉ | BUJARDADO [R12C] - FM3159EF



TECHNICAL FEATURES

MATERIAL: TECHNICAL PORCELAIN TILE

PRODUCTION:
SINGLE-LOADING TECHNOLOGY WITH POWDER HOMOGENIZATION AND HIGH GRANULOMETRY REDUCTION
HYDRAULIC ISOSTATIC VERTICAL PRESSING [$\geq 500\text{Kg/cm}^2$]
SINGLE FIRING WITH EXTRA LONG CYCLE AND HIGH TEMPERATURE [1220-1230 °C]
AUTOMATIC SQUARING AND RECTIFYING OPERATIONS FOR ALL PIECES

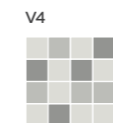
TECHNICAL FEATURES: DADOS TÉCNICOS:	STANDARDS NORMAS	STANDARDS SPECIFICATIONS VALORES DA NORMA	COASTLAND COLLECTION AVERAGE VALUES VALORES MÉDIOS
LENGTH AND WIDTH TOLERANCE DESVIO MÁXIMO PARA COMPRIMENTO E LARGURA		$\pm 0,6 \%$	$\pm 0,3 \%$
THICKNESS TOLERANCE DESVIO MÁXIMO PARA ESPESSURA		$\pm 5 \%$	$\pm 3 \%$
STRAIGHTNESS OF SIDES TOLERANCE DESVIO MÁXIMO DA RECTILINEARIDADE	ISO 10545-2	$\pm 0,5 \%$	$\pm 0,3 \%$
RECTANGULARITY TOLERANCE DESVIO MÁXIMO ORTOGONALIDADE		$\pm 0,5 \%$	$\pm 0,3 \%$
FLATNESS TOLERANCE DESVIO MÁXIMO PLANARIDADE		$\pm 0,5 \%$	$\pm 0,3 \%$
WATER ABSORPTION ABSORÇÃO DE ÁGUA	ISO 10545-3	$\leq 0,5 \%$	$< 0,1 \%$
MODULUS OF RUPTURE MÓDULO DE RUPTURA	ISO 10545-4	$\geq 35 \text{ N/mm}^2$	$\geq 45 \text{ N/mm}^2$
BREAKING STRENGTH FORÇA DE RUPTURA		$\geq 1300 \text{ N}$	$\geq 2500 \text{ N}$
DEEP ABRASION RESISTANCE RESISTÊNCIA À ABRASÃO PROFUNDA	ISO 10545-6	$\leq 175 \text{ mm}^3$	$\leq 130 \text{ mm}^3$
LINEAR THERMAL EXPANSION DILATAÇÃO TÉRMICA LINEAR	ISO 10545-8	DECLARED VALUE VALOR DECLARADO	$\leq 7 \times 10^{-6} / \text{K}^{-1}$
THERMAL SHOCK RESISTANCE RESISTÊNCIA AO CHOQUE TÉRMICO	ISO 10545-9	ORDERED REQUERIDA	RESISTANT RESISTENTE
FROST RESISTANCE RESISTÊNCIA AO GELO	ISO 10545-12	ORDERED REQUERIDA	RESISTANT RESISTENTE
RESISTANCE TO CHEMICALS (ACIDS AND ALKALIS) RESISTÊNCIA AOS QUÍMICOS (ACIDOS E BASES)		DECLARED VALUE VALOR DECLARADO	CLASS LA CLASSE LA
RESISTANCE TO CHEMICALS (HOUSEHOLD CHEMICALS & SWIMMING POOL ADDITIVES) RESISTÊNCIA AOS QUÍMICOS (PRODUTOS QUÍMICOS DOMÉSTICOS E ADITIVOS PARA ÁGUA DE PISCINAS)	ISO 10545-13	MINIMUM CLASS B MÍNIMO CLASSE B	CLASS VA CLASSE VA
STAIN RESISTANCE RESISTÊNCIA À MANCHA	ISO 10545-14	DECLARED VALUE VALOR DECLARADO	5

DIN 51097	CLASS A $\geq 12^\circ$ CLASS B $\geq 18^\circ$ CLASS C $\geq 24^\circ$	B MT MATT NATURAL C EF BUSH-HAMMERED EFFECT EFEITO BOJARDADO
-----------	-------------------------------------------------------------------------------	-------------------------------------------------------------------------------------

SLIP RESISTANCE
RESISTÊNCIA AO ESCORREGAMENTO

DIN 51130	MIN R9 $6^\circ - 10^\circ$ MIN R10 $10^\circ - 19^\circ$ MIN R11 $19^\circ - 27^\circ$ MIN R12 $27^\circ - 35^\circ$ MIN R13 $> 35^\circ$	R10 MT MATT NATURAL R12 EF BUSH-HAMMERED EFFECT EFEITO BOJARDADO
-----------	--------------------------------------------------------------------------------------------------------------------------------------------------------	-----------------------------------------------------------------------------------------

V4



SUBSTANTIAL COLOR VARIATION
VARIAÇÃO DE COR SUBSTANCIAL



UNIQUE COLLECTION

3 COLORS
3 SIZES
3 SURFACES

Unique is a stunning Collection of unglazed double and triple-loaded porcelain stoneware. It offers an endless number of concrete plates with incomparable raw touch and ultimate design.

This exclusive Collection achieves the real identity of concrete through a very ingenious production process.

It starts with the double-loading operation made with powder homogenization and hiper granulometry reduction, providing a grain diameter with less than 150µm. When producing UNIQUE BE and UNIQUE BS a third loading is applied using GRT-Grain Repulsion Technology®.

As a result, we get a very compact powder pressed by hydraulic isostatic vertical presses with more than 500 kgf/cm². Pieces are then shaped through a high-speed mechanical process and fired in an extra long cycle at the temperature of 1230°C.

Automatic squaring and rectification operations are finally performed in all pieces to guarantee squareness, monocaliber and modularity.

Unique é uma Coleção deslumbrante feita em grés porcelânico não esmaltado de duplo e triplo carregamento. Este produto oferece um número infinito de placas de betão com um toque cru inigualável e um design de vanguarda.

Trata-se de uma Coleção exclusiva que alcança a verdadeira identidade do betão através de um processo de produção altamente inovador.

Tudo começa com a operação de duplo carregamento feita depois da homogeneização do pó e da hiper-redução granulométrica, de onde resulta um grão com diâmetro inferior a 150µm. Ao produzir a UNIQUE BE e a UNIQUE BS é feito um terceiro carregamento com recurso à tecnologia de repulsão granulométrica, GRT - Grain Repulsion Technology®.

O fino pó obtido é sujeito a uma força de 500 kgf/cm² através de operações de prensagem com recurso a prensas hidráulicas isostáticas verticais. As peças são posteriormente modeladas através de um processo mecânico de alta velocidade e cozidas em ciclo extra longo à temperatura de 1230°C.

Por fim são realizadas as operações de esquadatura e rectificação por forma a garantir um só calibre, esquadria e modularidade.

UNIQUE COLLECTION



UNIQUE NATIVE 89X89cm + STAINLESS STEEL DECOR KIT
[BÉTON SMART]

COASTLAND WHITE 89X89cm
[HAMMERED EFFECT R12C]

COASTLAND BLACK 89X89cm
[HAMMERED EFFECT R12C]

UNIQUE COLLECTION



UNIQUE WHITE 59,7X119cm + STAINLESS STEEL FIXING KIT
[BÉTON SMART]

CONCRETE GREY 59,7X59,7cm
[NATURE R10A]

UNIQUE COLLECTION



UNIQUE NATIVE 59,7X119cm + STAINLESS STEEL DECOR KIT
[BETON SMART]

UNIQUE COLLECTION



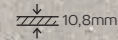
INWOOD FIR 19,7X119cm
[MATT]



UNIQUE NATIVE 59,7X59,7cm + IRON FIXING KIT
[BÉTON SMART]

UNIQUE COLLECTION

MATT R9



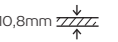
A natural and smooth surface with an incomparable raw touch given by the thin powder used on the double-loading process. Each UNIQUE [Matt] plate is individually designed using a random system that brings the unrepeatability and uniqueness of nature to our day-to-day living.

This product is a completely unglazed porcelain tile suitable for all possible applications, walls and floors, mainly for those with high traffic exposure.

Uma superfície macia e natural com um incomparável toque cru proporcionado pelo finíssimo pó utilizado no processo de duplo carregamento. Cada placa UNIQUE [Mate] é desenhada individualmente usando um sistema aleatório que transporta para o nosso quotidiano o carácter único e singular da natureza.

Como se trata de um produto completamente não esmaltado, em grés porcelânico, é adequado a qualquer tipo de aplicação, revestimento e pavimento, sobretudo para locais onde existe uma grande exposição ao tráfego.

UNIQUE WHITE



59,7X119cm 24"x47"



MAT | MATE [R9] - FM2189MT

59,7X59,7cm 24"x24"



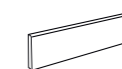
MAT | MATE [R9] - FM2202MT

89X89cm 35"x35"



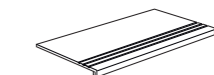
MAT | MATE [R9] - FM2910MT

SKIRTING
RODAPÉ



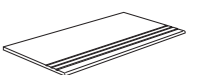
7x59,7cm 3"x24"
7x89cm 3"x35"

GROOVED STEP WITH RISER PIECE
DEGRAU SULCADO COM ESPELHO



29,7x59,7cm 12"x24"

GROOVED ROUNDED STEP
DEGRAU BOLEADO SULCADO



29,7x59,7cm 12"x24"

MONOCALIBER AND FULLY MODULAR FOR ALL SIZES [2mm joint]
MONOCALIBRE E TOTALMENTE MODULAR PARA TODOS OS FORMATOS [2mm joint]

UNIQUE NATIVE

10,8mm

59,7X119cm 24"X47"



MAT | MATE [R9] - FM2191MT

59,7X59,7cm 24"X24"



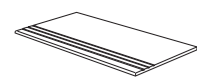
MAT | MATE [R9] - FM2201MT

89X89cm 35"X35"



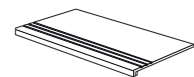
MAT | MATE [R9] - FM2907MT

GROOVED ROUNDED STEP
DEGRAU BOLEADO SULCADO



29,7x59,7cm 12"x24"

GROOVED STEP WITH RISER PIECE
DEGRAU SULCADO COM ESPELHO



29,7x59,7cm 12"x24"

SKIRTING
RODAPÉ



7x59,7cm 3"x24"
7x89cm 3"x35"

MONOCALIBER AND FULLY MODULAR FOR ALL SIZES [2mm joint]
MONOCALIBRE E TOTALMENTE MODULAR PARA TODOS OS FORMATOS [2mm joint]

UNIQUE BLACK

10,8mm

59,7X119cm 24"X47"



MAT | MATE [R9] - FM2190MT

59,7X59,7cm 24"X24"



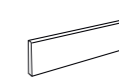
MAT | MATE [R9] - FM2200MT

89X89cm 35"X35"



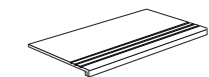
MAT | MATE [R9] - FM2913MT

SKIRTING
RODAPÉ



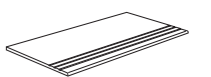
7x59,7cm 3"x24"
7x89cm 3"x35"

GROOVED STEP WITH RISER PIECE
DEGRAU SULCADO COM ESPELHO



29,7x59,7cm 12"x24"

GROOVED ROUNDED STEP
DEGRAU BOLEADO SULCADO



29,7x59,7cm 12"x24"

MONOCALIBER AND FULLY MODULAR FOR ALL SIZES [2mm joint]
MONOCALIBRE E TOTALMENTE MODULAR PARA TODOS OS FORMATOS [2mm joint]

UNIQUE COLLECTION

BÉTON

10,8mm

An amazing surface with an exquisite three dimensional effect that brings concrete imperfections alive. bubbles, sheens and salt migration spots are the result of the GRT - Grain Repulsion Technology® used on the third loading.

UNIQUE [Béton] is a distinctive product made of unglazed triple-loaded porcelain specially designed to be applied in interior and exterior walls.

It's advisable the use of joints without grout. We recommend at least a 2mm joint.

Uma superfície incrível com um efeito tridimensional único que transmite as verdadeiras imperfeições do betão. bolhas, brilhos e manchas de migração de sais, são o resultado da Tecnologia de Repulsão Granulométrica, GRT - Grain Repulsion Technology® utilizada no terceiro carregamento.

UNIQUE [Betão] é um produto muito particular, composto por peças em grés porcelânico não esmaltado, concebido para aplicações de revestimento, tanto interior como exterior.

É aconselhável o uso de junta sem argamassa de selagem. Recomendamos uma junta de pelo menos 2mm.

UNIQUE WHITE

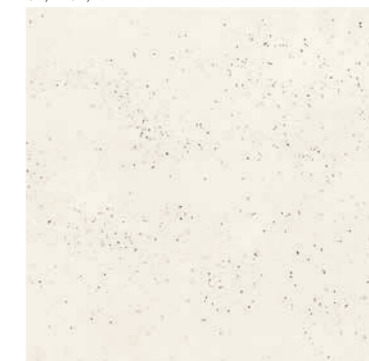
10,8mm

59,7X119cm 24"X47"



BÉTON | BETÃO FM2193BE

59,7X59,7cm 24"X24"



BÉTON | BETÃO FM2269BE

89X89cm 35"X35"



BÉTON | BETÃO FM2911BE

MONOCALIBER AND FULLY MODULAR FOR ALL SIZES [2mm joint]
MONOCALIBRE E TOTALMENTE MODULAR PARA TODOS OS FORMATOS [2mm joint]

UNIQUE NATIVE

10,8mm

59,7X119cm 24"X47"



BÉTON | BETÃO FM2194BE

59,7X59,7cm 24"X24"



BÉTON | BETÃO FM2267BE

59,7X119cm 24"X47"



BÉTON | BETÃO FM2198BE

UNIQUE BLACK

10,8mm

59,7X59,7cm 24"X24"



BÉTON | BETÃO FM2268BE

89X89cm 35"X35"



BÉTON | BETÃO FM2908BE

89X89cm 35"X35"



BÉTON | BETÃO FM2914BE

UNIQUE COLLECTION

BÉTON SMART

10,8mm

An incomparable surface full of concrete imperfections, bubbles, sheens and salt migration spots, made with the use of GRT - Grain Repulsion Technology®. UNIQUE [Béton Smart] is produced with four milled holes reminding us the concrete formwork performed with wood and hooks by artisans and builders.

UNIQUE [Béton Smart] is a product made of unglazed triple-loaded porcelain designed for interior and exterior wall coverings. It can be supplied with two fixing-kits one in stainless steel and another in iron. It is also possible to be supplied with the same hardware but only for decorative purposes.

It's advisable the use of joints without grout. We recommend at least a 2mm joint.

Uma superfície ímpar, imperfeita como o betão, com bolhas, brilhos e manchas de migração de sais que resultam da utilização da Tecnologia de Repulsão Granulométrica, GRT - Grain Repulsion Technology® utilizada no terceiro carregamento. UNIQUE [Betão Smart] é produzida com quatro furos lembrando-nos a cofragem do betão realizada, com madeira e ganchos metálicos, pelos artesãos e construtores.

UNIQUE [Betão Smart] é um produto em grés porcelânico não esmaltado de tripa-carga concebido para revestimento interior e exterior. Pode ser fornecido com dois kits de fixação ou em ferro. Esse mesmo sistema também está disponível apenas para efeitos decorativos.

É aconselhável o uso de junta sem argamassa de selagem. Recomendamos uma junta de pelo menos 2mm.

UNIQUE WHITE

10,8mm

59,7X119cm 24"X47"



BÉTON SMART | BETÃO SMART FM2196BS

59,7X59,7cm 24"X24"



BÉTON SMART | BETÃO SMART FM2270BS

89X89cm 35"X35"



BÉTON SMART | BETÃO SMART FM2912BS

UNIQUE NATIVE

10,8mm

59,7X119cm 24"X47"



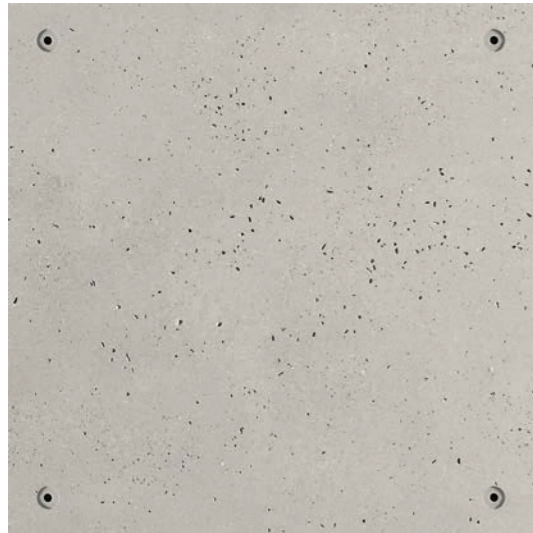
BÉTON SMART | BETÃO SMART FM2197BS

59,7X59,7cm 24"X24"



BÉTON SMART | BETÃO SMART FM2271BS

89X89cm 35"X35"



BÉTON SMART | BETÃO SMART FM2909BS

MONOCALIBER AND FULLY MODULAR FOR ALL SIZES [2mm joint]
MONOCALIBRE E TOTALMENTE MODULAR PARA TODOS OS FORMATOS [2mm joint]

UNIQUE BLACK

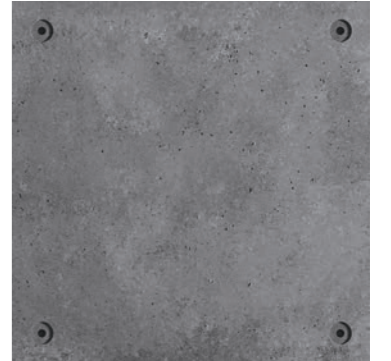
10,8mm

59,7X119cm 24"X47"



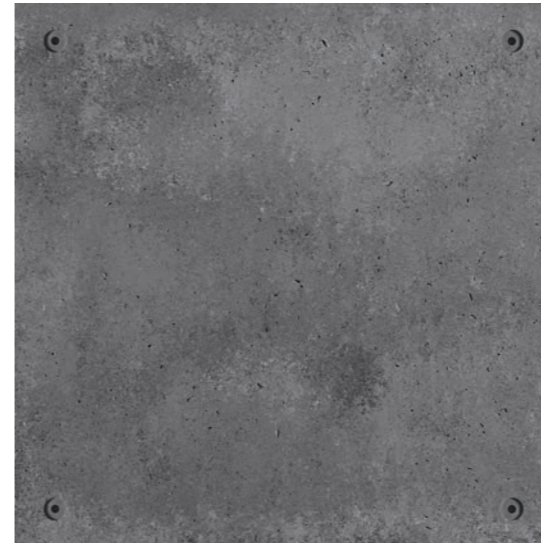
BÉTON SMART | BETÃO SMART FM2195BS

59,7X59,7cm 24"X24"



BÉTON SMART | BETÃO SMART FM2272BS

89X89cm 35"X35"



BÉTON SMART | BETÃO SMART FM2915BS

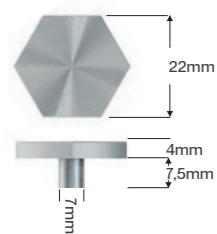
MONOCALIBER AND FULLY MODULAR FOR ALL SIZES [2mm joint]
MONOCALIBRE E TOTALMENTE MODULAR PARA TODOS OS FORMATOS [2mm joint]

FIXINGKITS

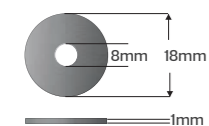
STAINLESS STEEL FIXING KIT KIT DE FIXAÇÃO EM AÇO INOX

FMK1

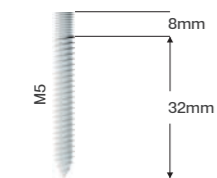
STAINLESS STEEL BOLT CAP | TAMPA DE PARAFUSO EM AÇO INOX



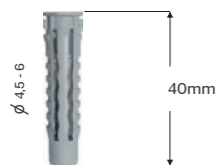
PLASTIC RING | ANILHA EM PLÁSTICO



STAINLESS STEEL SCREW | PARAFUSO EM AÇO INOX



PLASTIC SLEEVE | BUCHA PLÁSTICA



* IRON FIXING KIT KIT DE FIXAÇÃO EM FERRO

FMK3

IRON BOLT CAP | TAMPA DE PARAFUSO EM FERRO



PLASTIC RING | ANILHA EM PLÁSTICO



STAINLESS STEEL SCREW | PARAFUSO EM AÇO INOX



PLASTIC SLEEVE | BUCHA PLÁSTICA



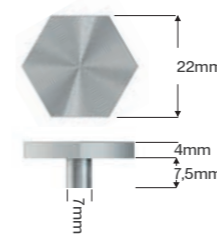
* IT'S NOT ADVISABLE TO INSTALL IRON KITS IN WET AREAS
NÃO É ACONSELHÁVEL INSTALAR KITS EM FERRO EM ZONAS HÚMIDAS

DECORATIONKITS

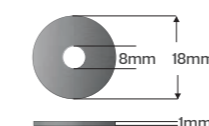
STAINLESS STEEL DECORATION KIT KIT DE DECORAÇÃO EM AÇO INOX

FMK4

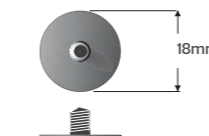
STAINLESS STEEL BOLT CAP | TAMPA DE PARAFUSO EM AÇO INOX



PLASTIC RING | ANILHA EM PLÁSTICO



PLASTIC STOPPER | FIXADOR EM PLÁSTICO



* IRON DECORATION KIT KIT DE DECORAÇÃO EM FERRO

FMK2

IRON BOLT CAP | TAMPA DE PARAFUSO EM FERRO



PLASTIC RING | ANILHA EM PLÁSTICO

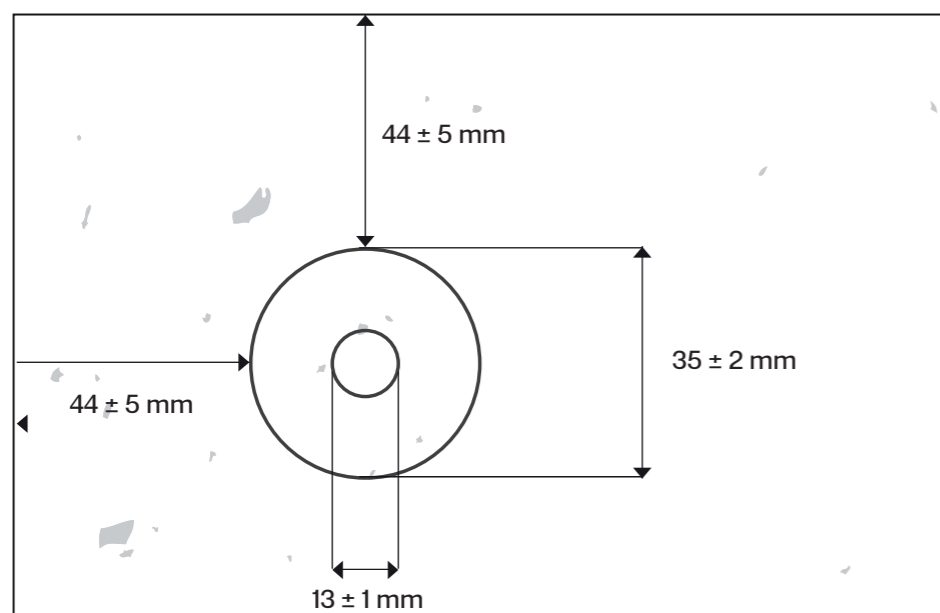
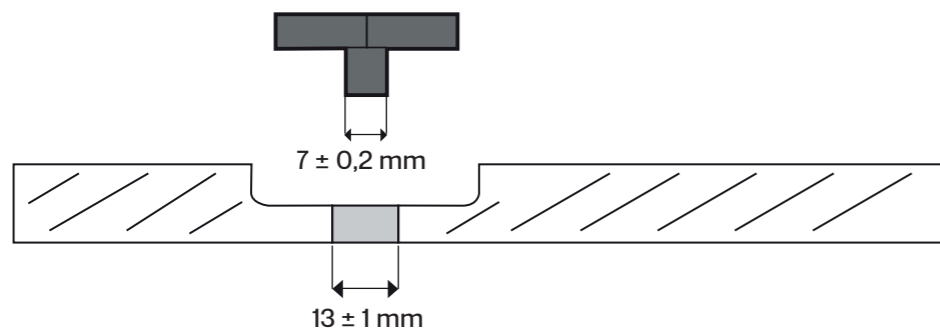
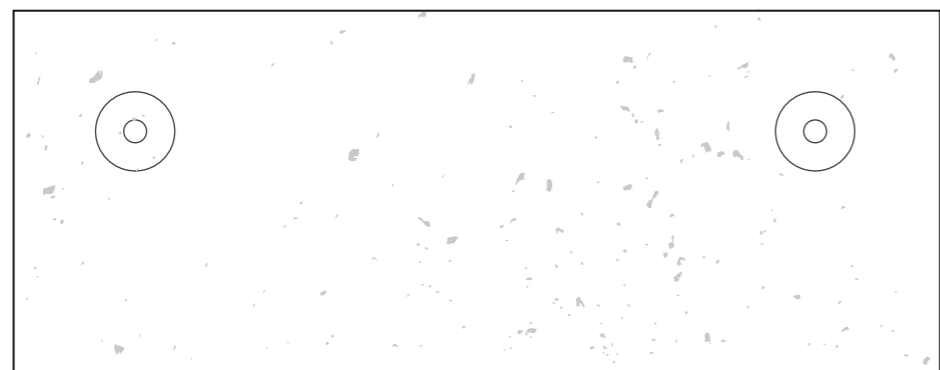


PLASTIC STOPPER | FIXADOR EM PLÁSTICO



* IT'S NOT ADVISABLE TO INSTALL IRON KITS IN WET AREAS
NÃO É ACONSELHÁVEL INSTALAR KITS EM FERRO EM ZONAS HÚMIDAS

FIXINGHOLE



TECHNICAL FEATURES

MATERIAL:

UNGLAZED DOUBLE AND TRIPLE-LOADED PORCELAIN STONEWARE

PRODUCTION:

DOUBLE-LOADING WITH POWDER HOMOGENIZATION AND HIGH GRANULOMETRY REDUCTION ON THE SECOND LAYER [$\leq 150 \mu\text{m}$]

THIRD LOADING WITH GRAIN REPULSION TECHNOLOGY

HYDRAULIC ISOSTATIC VERTICAL PRESSING [$\geq 500\text{KG}/\text{cm}^2$]

HIGH-SPEED MECHANICAL SHAPING

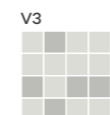
SINGLE FIRING WITH EXTRA LONG CYCLE AT HIGH TEMPERATURE [1220-1230 °C]

AUTOMATIC SQUARING AND RECTIFYING OPERATION FOR ALL PIECES

TECHNICAL FEATURES: DADOS TÉCNICOS:	STANDARDS NORMAS	STANDARDS SPECIFICATIONS VALORES DA NORMA	UNIQUE COLLECTION AVERAGE VALUES VALORES MÉDIOS
LENGTH AND WIDTH TOLERANCE DESVIO MÁXIMO PARA COMPRIMENTO E LARGURA		$\pm 0,6 \%$	$\pm 0,3 \%$
THICKNESS TOLERANCE DESVIO MÁXIMO PARA ESPESSURA		$\pm 5 \%$	$\pm 3 \%$
STRAIGHTNESS OF SIDES TOLERANCE DESVIO MÁXIMO DA RECTILINEARIDADE	ISO 10545-2	$\pm 0,5 \%$	$\pm 0,3 \%$
RECTANGULARITY TOLERANCE DESVIO MÁXIMO ORTOGONALIDADE		$\pm 0,5 \%$	$\pm 0,3 \%$
FLATNESS TOLERANCE DESVIO MÁXIMO PLANARIDADE		$\pm 0,5 \%$	$\pm 0,3 \%$
WATER ABSORPTION ABSORÇÃO DE ÁGUA	ISO 10545-3	$\leq 0,5 \%$	$< 0,1 \%$
MODULUS OF RUPTURE MÓDULO DE RUPTURA	ISO 10545-4	$\geq 35 \text{ N}/\text{mm}^2$	$\geq 45 \text{ N}/\text{mm}^2$ Except/Excepto BE and BS finishing ($\geq 35 \text{ N}/\text{mm}^2$)
BREAKING STRENGTH FORÇA DE RUPTURA		$\geq 1300 \text{ N}$	$\geq 2500 \text{ N}$ Except/Excepto BE and BS finishing ($\geq 2000 \text{ N}$)
DEEP ABRASION RESISTANCE RESISTÊNCIA À ABRASÃO PROFUNDA	ISO 10545-6	$\leq 175 \text{ mm}^3$	$\leq 130 \text{ mm}^3$
LINEAR THERMAL EXPANSION DILATAÇÃO TÉRMICA LINEAR	ISO 10545-8	DECLARED VALUE VALOR DECLARADO	$\leq 7 \times 10^{-6} / \text{K}^{-1}$
THERMAL SHOCK RESISTANCE RESISTÊNCIA AO CHOQUE TÉRMICO	ISO 10545-9	ORDERED REQUERIDA	RESISTANT RESISTENTE
FROST RESISTANCE RESISTÊNCIA AO GELO	ISO 10545-12	ORDERED REQUERIDA	RESISTANT RESISTENTE
RESISTANCE TO CHEMICALS (ACIDS AND ALKALIS) RESISTÊNCIA AOS QUÍMICOS (ACIDOS E BASES)		DECLARED VALUE VALOR DECLARADO	CLASS LA CLASSE LA
RESISTANCE TO CHEMICALS (HOUSEHOLD CHEMICALS & SWIMMING POOL ADDITIVES) RESISTÊNCIA AOS QUÍMICOS (PRODUTOS QUÍMICOS DOMÉSTICOS E ADITIVOS PARA ÁGUA DE PISCINAS)	ISO 10545-13	MINIMUM CLASS B MÍNIMO CLASSE B	CLASS A CLASSE A
STAIN RESISTANCE RESISTÊNCIA À MANCHA	ISO 10545-14	DECLARED VALUE VALOR DECLARADO	5
	DIN 51130	MIN R9 6° - 10° MIN R10 10° - 19° MIN R11 19° - 27° MIN R12 27° - 35° MIN R13 >35°	R9 MATT NATURAL
SLIP RESISTANCE RESISTÊNCIA AO ESCORREGAMENTO	ENV 12633		RD:44 MATT NATURAL
	BS 7976-2	4S	PTV:45 MATT NATURAL
		TRL	PTV:44 MATT NATURAL

UPEC: THE "PURE" PRODUCTS MADE BY FERRO MASI ARE CERTIFIED BY CSTB UNDER THE NF029. THE UPEC CERTIFICATION CAN BE FOUND ON WWW.CSTB.FR

OS PRODUTOS "PURE" FABRICADOS PELA FERRO MASI ESTÃO CERTIFICADOS PELO CSTB SOB O NÚMERO NF029. A CERTIFICAÇÃO UPEC PODE SER ENCONTRADA EM WWW.CSTB.FR



MODERATE COLOR VARIATION
VARIAÇÃO DE COR MODERADA





GRANITY AIR BEIGE 59,7X119cm
[POLISHED]

GRANITY AIR COCOA 59,7X119cm
[MATT R10A]

GRANITY AIR COLLECTION

10 COLORS
10 SIZES
4 SURFACES

The Granity Air Collection offers the elegance of natural stone in its purest form.

It is a unique architectural product completely made of unglazed double loaded porcelain. Due to its superb technical performance, the Granity Air Collection is suitable for all possible applications, including very high traffic places.

The Granity Air production begins with the "Dry Colortech" operation. The coloured powder goes through a hyper granulometric reduction process until it reaches a grain diameter of 150µm. This thin powder is homogeneously spread over another layer of non-reduced powder and afterwards both undergo a force of 500Kg per cm² carried out by a hydraulic isostatic vertical press.

Tiles are then fired in an extra long cycle at 1230°C and automatically rectified in order to guarantee monocaliber and full modularity for all sizes.

Composed by ten different sizes, ten colors and four different surfaces all in the same 10,8mm thickness with the exception of the Polished finish, the Granity Air Collection offers the Architect a wide range of nearly than 400 different porcelain tiles.

A coleção Granity Air oferece-nos a elegância da pedra natural na sua forma mais pura.

Trata-se de uma coleção única, composta por peças de grés porcelânico não esmaltado produzidas com recurso à tecnologia de dupla-carga. Devido às elevadas prestações técnicas e à sua superfície ultra-compacta o produto Granity Air é adequado a qualquer tipo de aplicação, incluindo os espaços de tráfego mais intenso.

A produção da Coleção Granity Air tem início com a coloração a seco, "Dry Colortech". O pó que daí resulta é em seguida submetido a uma operação de hiper redução granulométrica até atingir um diâmetro de 150µm. Esse pó ultrafino é então uniformemente distribuído sobre uma outra camada de pó com granulometria normal, sendo ambos sujeitos a uma força de 500Kg por cm² numa operação de prensagem que é levada a cabo com prensas hidráulicas isostáticas verticais.

As peças são posteriormente cozidas com um ciclo extra longo à temperatura de 1230°C e rectificadas de forma automática, garantindo assim um só calibre e modularidade total para todos os formatos.

Composta por dez formatos, dez cores e quatro acabamentos, e sempre com espessura de 10,8mm à excepção do acabamento Polido, a Coleção Granity Air oferece uma variedade de quase 400 peças distintas.

GRANITY AIR SURFACES

POLISHED

9,8mm

MATT R10A

10,8mm

HAMMERED EFFECT R11C

10,8mm

STONE R12C

10,8mm





GRANITY AIR COLLECTION

URBAN
COFFEE

ESPRESSO	ESPRESSO	SOFT DRINKS	ESPRESSO
AMERICANO 2.00	FRANCO 2.40	WASSER LAIT 0.50	AMERICANO 2.00
CAPPUCCINO 2.20	FRANCO MIT 1.80	APFELSAFT 1.50	CAPPUCCINO 2.20
ESPRESSO MACCHIATO 2.10	CHAI LATTE 2.20	LEMONADE 1.50	ESPRESSO MACCHIATO 2.10
ESPRESSO 1.50	EXTRA SAHNE 1.40	CHARITÄT 1.50	LATTE 2.40
	EXTRA SHOT 1.20	COCA COLA 1.20	FLAT WHITE 2.20
	EXTRA FROHA 1.80	FRÜZ KOLA 1.20	MILCHHAUFLE 1.80
	HOT CHOCOLATE 3.00	PEPSI MAX 1.20	ESPRESSO 1.50

B D F M Downtown & Brooklyn →

GRANITY AIR SEPIA 59,7X59,7cm | 89X89cm
[POLISHED]

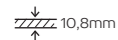
GRANITY AIR BEIGE 89X89cm
[MATT RIOA]



GRANITY AIR COLLECTION

GRANITY AIR FROST 59,7X59,7cm | 89X89cm
[POLISHED]

GRANITY AIR COAL 89X89cm
[MATT R10A]

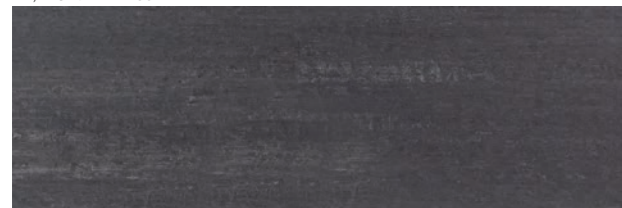


89X89cm 35"X35"



**** POLISHED | POLI |** POLIDO - FM2929PO
MATT | MATE [R10A] - FM808MT
HAMMERED EFFECT | BOUCHARDÉ | BUJARDADO [R11C] - FM816EF
STONE | PIERRE | PEDRA [R12C] - FM826ST

29,7X89cm 12"X35"



**** POLISHED | POLI |** POLIDO - FM2924PO
MATT | MATE [R10A] - FM2743MT
HAMMERED EFFECT | BOUCHARDÉ | BUJARDADO [R11C] - FM2753EF
STONE | PIERRE | PEDRA [R12C] - FM2763ST

29,7X29,7cm 12"X12"

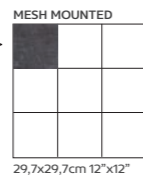


POLISHED | POLI | POLIDO - FM1379PO
MATT | MATE [R10A] - FM1352MT
HAMMERED EFFECT | BOUCHARDÉ | BUJARDADO [R11C] - FM1359EF
STONE | PIERRE | PEDRA [R12C] - FM1365ST

9,7X9,7cm 4"X4"



POLISHED | POLI | POLIDO - FM845PO
MATT | MATE [R10A] - FM1354MT
HAMMERED EFFECT | BOUCHARDÉ | BUJARDADO [R11C] - FM822EF
STONE | PIERRE | PEDRA [R12C] - FM832ST

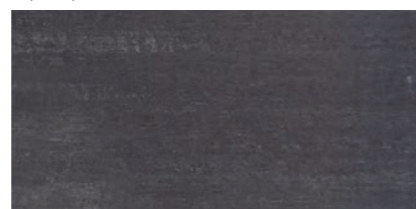


59,7X59,7cm 24"X24"



POLISHED | POLI | POLIDO - FM1373PO
MATT | MATE [R10A] - FM1346MT
HAMMERED EFFECT | BOUCHARDÉ | BUJARDADO [R11C] - FM1845EF
STONE | PIERRE | PEDRA [R12C] - FM1847ST

29,7X59,7cm 12"X24"



POLISHED | POLI | POLIDO - FM1374PO
MATT | MATE [R10A] - FM1347MT
HAMMERED EFFECT | BOUCHARDÉ | BUJARDADO [R11C] - FM1355EF
STONE | PIERRE | PEDRA [R12C] - FM1360ST

14,7X59,7cm 6"X24"



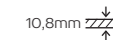
POLISHED | POLI | POLIDO - FM1375PO
MATT | MATE [R10A] - FM1348MT
HAMMERED EFFECT | BOUCHARDÉ | BUJARDADO [R11C] - FM1356EF
STONE | PIERRE | PEDRA [R12C] - FM1361ST

9,7X59,7cm 4"X24"



POLISHED | POLI | POLIDO - FM1376PO
MATT | MATE [R10A] - FM1349MT
HAMMERED EFFECT | BOUCHARDÉ | BUJARDADO [R11C] - FM1357EF
STONE | PIERRE | PEDRA [R12C] - FM1362ST

**** FINISHING AVAILABLE UNDER REQUEST**
**** ACABAMENTO DISPONÍVEL SOB CONSULTA**

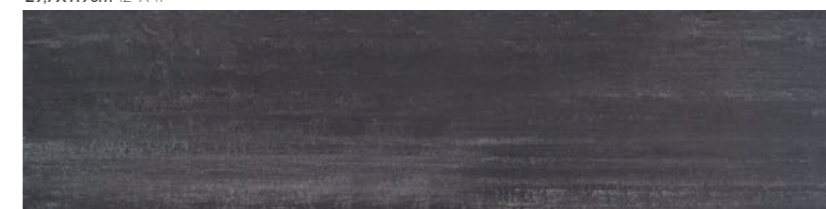


59,7X119cm 24"X47"



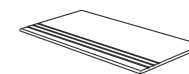
POLISHED | POLI | POLIDO - FM841PO
MATT | MATE [R10A] - FM804MT
HAMMERED EFFECT | BOUCHARDÉ | BUJARDADO [R11C] - FM813EF
STONE | PIERRE | PEDRA [R12C] - FM823ST

29,7X119cm 12"X47"



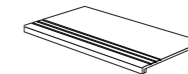
POLISHED | POLI | POLIDO - FM842PO
MATT | MATE [R10A] - FM805MT
HAMMERED EFFECT | BOUCHARDÉ | BUJARDADO [R11C] - FM814EF
STONE | PIERRE | PEDRA [R12C] - FM824ST

GROOVED ROUNDED STEP
 DEGRAU BOLEADO SULCADO



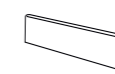
29,7x29,7cm 12"x12"
 29,7x59,7cm 12"x24"

GROOVED STEP WITH RISER PIECE
 DEGRAU SULCADO COM ESPELHO



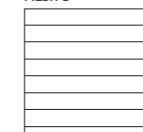
29,7x59,7cm 12"x24"

SKIRTING
 RODAPÉ



7x29,7cm 3"x12"
 7x59,7cm 3"x24"
 7x89cm 3"x35"

MESH 8



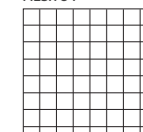
29,7x29,7cm 12"x12"

MESH 16



29,7x29,7cm 12"x12"

MESH 64



29,7x29,7cm 12"x12"

SIZES AVAILABLE UNDER REQUEST
 FORMATOS DISPONÍVEIS SOB CONSULTA

14,7X119cm 6"X47"



9,7X119cm 4"X47"



4,7X59,7cm 2"X24"



14,7X14,7cm 6"X6"



MONOCALIBER AND FULLY MODULAR FOR ALL SIZES [2mm joint]
 MONOCALIBRE E TOTALMENTE MODULAR PARA TODOS OS FORMATOS [2mm joint]

GRANITY AIRSTEEL

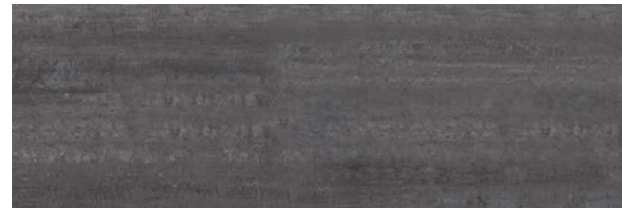
10,8mm

89X89cm 35"X35"



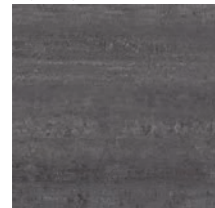
** POLISHED | POLI | POLIDO - FM2995PO
 MATT | MATE [R10A] - FM975MT
 HAMMERED EFFECT | BOUCHARDÉ | BUJARDADO [R11C] - FM984EF
 STONE | PIERRE | PEDRA [R12C] - FM992ST

29,7X89cm 12"X35"



** POLISHED | POLI | POLIDO - FM2996PO
 MATT | MATE [R10A] - FM2745MT
 HAMMERED EFFECT | BOUCHARDÉ | BUJARDADO [R11C] - FM2755EF
 STONE | PIERRE | PEDRA [R12C] - FM2765ST

29,7X29,7cm 12"X12"

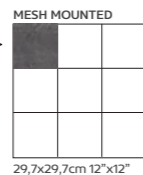


POLISHED | POLI | POLIDO - FM1534PO
 MATT | MATE [R10A] - FM1504MT
 HAMMERED EFFECT | BOUCHARDÉ | BUJARDADO [R11C] - FM1510EF
 STONE | PIERRE | PEDRA [R12C] - FM1518ST

9,7X9,7cm 4"X4"



POLISHED | POLI | POLIDO - FM1535PO
 MATT | MATE [R10A] - FM1506MT
 HAMMERED EFFECT | BOUCHARDÉ | BUJARDADO [R11C] - FM1511EF
 STONE | PIERRE | PEDRA [R12C] - FM1519ST

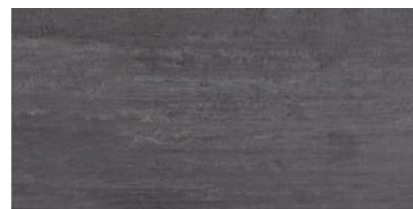


59,7X59,7cm 24"X24"



POLISHED | POLI | POLIDO - FM1528PO
 MATT | MATE [R10A] - FM1498MT
 HAMMERED EFFECT | BOUCHARDÉ | BUJARDADO [R11C] - FM1507EF
 STONE | PIERRE | PEDRA [R12C] - FM1512ST

29,7X59,7cm 12"X24"



POLISHED | POLI | POLIDO - FM1529PO
 MATT | MATE [R10A] - FM1499MT
 HAMMERED EFFECT | BOUCHARDÉ | BUJARDADO [R11C] - FM1508EF
 STONE | PIERRE | PEDRA [R12C] - FM1513ST

14,7X59,7cm 6"X24"



POLISHED | POLI | POLIDO - FM1530PO
 MATT | MATE [R10A] - FM1500MT
 HAMMERED EFFECT | BOUCHARDÉ | BUJARDADO [R11C] - FM986EF
 STONE | PIERRE | PEDRA [R12C] - FM1514ST

9,7X59,7cm 4"X24"



POLISHED | POLI | POLIDO - FM1531PO
 MATT | MATE [R10A] - FM1501MT
 HAMMERED EFFECT | BOUCHARDÉ | BUJARDADO [R11C] - FM2675EF
 STONE | PIERRE | PEDRA [R12C] - FM1515ST

GRANITY AIRSTEEL

10,8mm

59,7X119cm 24"X47"



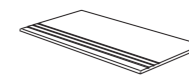
POLISHED | POLI | POLIDO - FM1002PO
 MATT | MATE [R10A] - FM971MT
 HAMMERED EFFECT | BOUCHARDÉ | BUJARDADO [R11C] - FM980EF
 STONE | PIERRE | PEDRA [R12C] - FM988ST

29,7X119cm 12"X47"



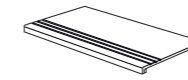
POLISHED | POLI | POLIDO - FM1003PO
 MATT | MATE [R10A] - FM972MT
 HAMMERED EFFECT | BOUCHARDÉ | BUJARDADO [R11C] - FM981EF
 STONE | PIERRE | PEDRA [R12C] - FM989ST

GROOVED ROUNDED STEP
 DEGRAU BOLEADO SULCADO



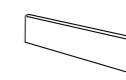
29,7x29,7cm 12"x12"
 29,7x59,7cm 12"x24"

GROOVED STEP WITH RISER PIECE
 DEGRAU SULCADO COM ESPELHO



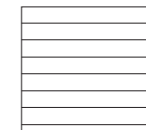
29,7x59,7cm 12"x24"

SKIRTING
 RODAPÉ



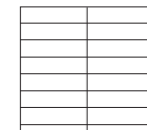
7x29,7cm 3"x12"
 7x59,7cm 3"x24"
 7x89cm 3"x35"

MESH 8



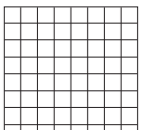
29,7x29,7cm 12"x12"

MESH 16



29,7x29,7cm 12"x12"

MESH 64



29,7x29,7cm 12"x12"

SIZES AVAILABLE UNDER REQUEST
 FORMATOS DISPONÍVEIS SOB CONSULTA

14,7X119cm 6"X47"



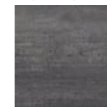
9,7X119cm 4"X47"



4,7X59,7cm 2"X24"



14,7X14,7cm 6"X6"

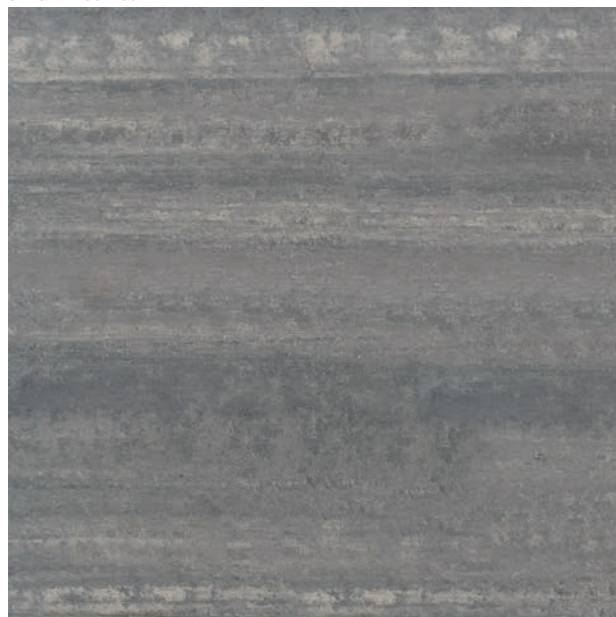


MONOCALIBER AND FULLY MODULAR FOR ALL SIZES [2mm joint]
 MONOCALIBRE E TOTALMENTE MODULAR PARA TODOS OS FORMATOS [2mm joint]

GRANITY AIRSILVER

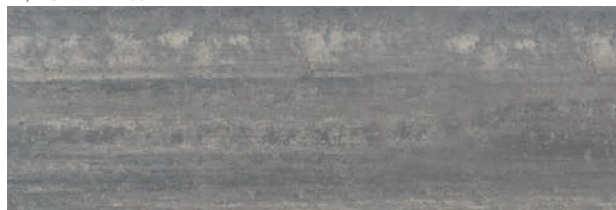
10,8mm

89X89cm 35"X35"



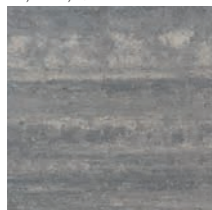
** POLISHED | POLI | POLIDO - FM2990PO
 MATT | MATE [R10A] - FM935MT
 HAMMERED EFFECT | BOUCHARDÉ | BUJARDADO [R11C] - FM944EF
 STONE | PIERRE | PEDRA [R12C] - FM952ST

29,7X89cm 12"X35"



** POLISHED | POLI | POLIDO - FM2997PO
 MATT | MATE [R10A] - FM2263MT
 HAMMERED EFFECT | BOUCHARDÉ | BUJARDADO [R11C] - FM2751EF
 STONE | PIERRE | PEDRA [R12C] - FM2761ST

29,7X29,7cm 12"X12"

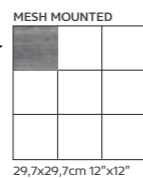


POLISHED | POLI | POLIDO - FM1497PO
 MATT | MATE [R10A] - FM1472MT
 HAMMERED EFFECT | BOUCHARDÉ | BUJARDADO [R11C] - FM1478EF
 STONE | PIERRE | PEDRA [R12C] - FM1485ST

9,7X9,7cm 4"X4"



POLISHED | POLI | POLIDO - FM970PO
 MATT | MATE [R10A] - FM1473MT
 HAMMERED EFFECT | BOUCHARDÉ | BUJARDADO [R11C] - FM948EF
 STONE | PIERRE | PEDRA [R12C] - FM956ST

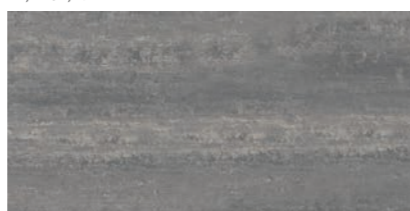


59,7X59,7cm 24"X24"



POLISHED | POLI | POLIDO - FM1492PO
 MATT | MATE [R10A] - FM1466MT
 HAMMERED EFFECT | BOUCHARDÉ | BUJARDADO [R11C] - FM1844EF
 STONE | PIERRE | PEDRA [R12C] - FM1479ST

29,7X59,7cm 12"X24"



POLISHED | POLI | POLIDO - FM1493PO
 MATT | MATE [R10A] - FM1467MT
 HAMMERED EFFECT | BOUCHARDÉ | BUJARDADO [R11C] - FM1474EF
 STONE | PIERRE | PEDRA [R12C] - FM1480ST

14,7X59,7cm 6"X24"



POLISHED | POLI | POLIDO - FM1494PO
 MATT | MATE [R10A] - FM1468MT
 HAMMERED EFFECT | BOUCHARDÉ | BUJARDADO [R11C] - FM1475EF
 STONE | PIERRE | PEDRA [R12C] - FM1481ST

9,7X59,7cm 4"X24"

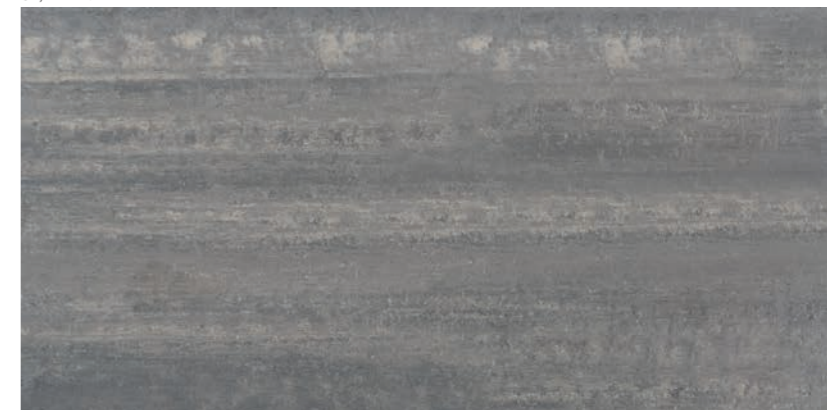


POLISHED | POLI | POLIDO - FM1495PO
 MATT | MATE [R10A] - FM1469MT
 HAMMERED EFFECT | BOUCHARDÉ | BUJARDADO [R11C] - FM1476EF
 STONE | PIERRE | PEDRA [R12C] - FM1482ST

GRANITY AIRSILVER

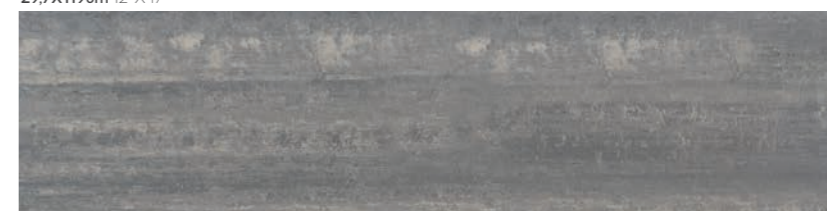
10,8mm

59,7X119cm 24"X47"



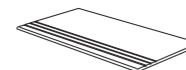
POLISHED | POLI | POLIDO - FM965PO
 MATT | MATE [R10A] - FM931MT
 HAMMERED EFFECT | BOUCHARDÉ | BUJARDADO [R11C] - FM941EF
 STONE | PIERRE | PEDRA [R12C] - FM949ST

29,7X119cm 12"X47"



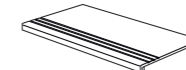
POLISHED | POLI | POLIDO - FM966PO
 MATT | MATE [R10A] - FM932MT
 HAMMERED EFFECT | BOUCHARDÉ | BUJARDADO [R11C] - FM942EF
 STONE | PIERRE | PEDRA [R12C] - FM950ST

GROOVED ROUNDED STEP
 DEGRAU BOLEADO SULCADO



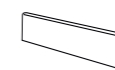
29,7x29,7cm 12"x12"
 29,7x59,7cm 12"x24"

GROOVED STEP WITH RISER PIECE
 DEGRAU SULCADO COM ESPELHO



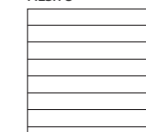
29,7x59,7cm 12"x24"

SKIRTING
 RODAPÉ



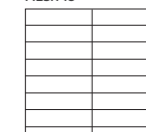
7x29,7cm 3"x12"
 7x59,7cm 3"x24"
 7x89cm 3"x35"

MESH 8



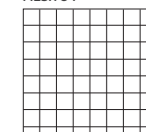
29,7x29,7cm 12"x12"

MESH 16



29,7x29,7cm 12"x12"

MESH 64



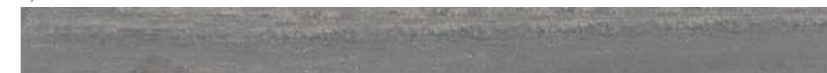
29,7x29,7cm 12"x12"

SIZES AVAILABLE UNDER REQUEST
 FORMATOS DISPONÍVEIS SOB CONSULTA

14,7X119cm 6"X47"



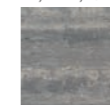
9,7X119cm 4"X47"



4,7X59,7cm 2"X24"



14,7X14,7cm 6"X6"



MONOCALIBER AND FULLY MODULAR FOR ALL SIZES [2mm joint]
 MONOCALIBRE E TOTALMENTE MODULAR PARA TODOS OS FORMATOS [2mm joint]

GRANITY AIR FROST

10,8mm

89X89cm 35"X35"



** POLISHED | POLI | POLIDO - FM2931PO
 MATT | MATE [R10A] - FM1188MT
 HAMMERED EFFECT | BOUCHARDÉ | BUJARDADO [R11C] - FM1198EF
 STONE | PIERRE | PEDRA [R12C] - FM1209ST

29,7X89cm 12"X35"



** POLISHED | POLI | POLIDO - FM2926PO
 MATT | MATE [R10A] - FM2744MT
 HAMMERED EFFECT | BOUCHARDÉ | BUJARDADO [R11C] - FM2754EF
 STONE | PIERRE | PEDRA [R12C] - FM2764ST

29,7X29,7cm 12"X12"

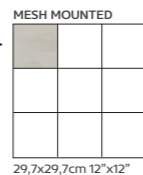


POLISHED | POLI | POLIDO - FM1738PO
 MATT | MATE [R10A] - FM1714MT
 HAMMERED EFFECT | BOUCHARDÉ | BUJARDADO [R11C] - FM1719EF
 STONE | PIERRE | PEDRA [R12C] - FM1726ST

9,7X9,7cm 4"X4"



POLISHED | POLI | POLIDO - FM1226PO
 MATT | MATE [R10A] - FM1194MT
 HAMMERED EFFECT | BOUCHARDÉ | BUJARDADO [R11C] - FM1204EF
 STONE | PIERRE | PEDRA [R12C] - FM1212ST



59,7X59,7cm 24"X24"



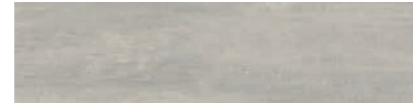
POLISHED | POLI | POLIDO - FM1732PO
 MATT | MATE [R10A] - FM1708MT
 HAMMERED EFFECT | BOUCHARDÉ | BUJARDADO [R11C] - FM1715EF
 STONE | PIERRE | PEDRA [R12C] - FM1720ST

29,7X59,7cm 12"X24"



POLISHED | POLI | POLIDO - FM1733PO
 MATT | MATE [R10A] - FM1709MT
 HAMMERED EFFECT | BOUCHARDÉ | BUJARDADO [R11C] - FM1716EF
 STONE | PIERRE | PEDRA [R12C] - FM1721ST

14,7X59,7cm 6"X24"



POLISHED | POLI | POLIDO - FM1734PO
 MATT | MATE [R10A] - FM1710MT
 HAMMERED EFFECT | BOUCHARDÉ | BUJARDADO [R11C] - FM1201EF
 STONE | PIERRE | PEDRA [R12C] - FM1722ST

9,7X59,7cm 4"X24"



POLISHED | POLI | POLIDO - FM1735PO
 MATT | MATE [R10A] - FM1711MT
 HAMMERED EFFECT | BOUCHARDÉ | BUJARDADO [R11C] - FM1717EF
 STONE | PIERRE | PEDRA [R12C] - FM1723ST

** FINISHING AVAILABLE UNDER REQUEST
 ** ACABAMENTO DISPONÍVEL SOB CONSULTA

GRANITY AIR FROST

10,8mm

59,7X119cm 24"X47"



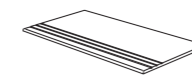
POLISHED | POLI | POLIDO - FM1223PO
 MATT | MATE [R10A] - FM1184MT
 HAMMERED EFFECT | BOUCHARDÉ | BUJARDADO [R11C] - FM1195EF
 STONE | PIERRE | PEDRA [R12C] - FM1205ST

29,7X119cm 12"X47"



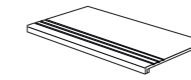
POLISHED | POLI | POLIDO - FM2789PO
 MATT | MATE [R10A] - FM1185MT
 HAMMERED EFFECT | BOUCHARDÉ | BUJARDADO [R11C] - FM1196EF
 STONE | PIERRE | PEDRA [R12C] - FM1206ST

GROOVED ROUNDED STEP
 DEGRAU BOLEADO SULCADO



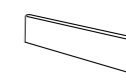
29,7x29,7cm 12"x12"
 29,7x59,7cm 12"x24"

GROOVED STEP WITH RISER PIECE
 DEGRAU SULCADO COM ESPELHO



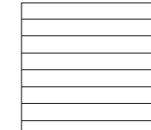
29,7x59,7cm 12"x24"

SKIRTING
 RODAPÉ



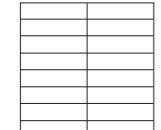
7x29,7cm 3"x12"
 7x59,7cm 3"x24"
 7x89cm 3"x35"

MESH 8



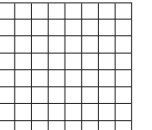
29,7x29,7cm 12"x12"

MESH 16



29,7x29,7cm 12"x12"

MESH 64



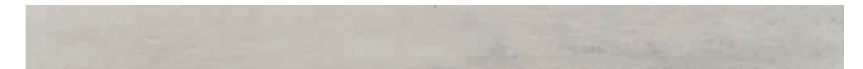
29,7x29,7cm 12"x12"

SIZES AVAILABLE UNDER REQUEST
 FORMATOS DISPONÍVEIS SOB CONSULTA

14,7X119cm 6"X47"



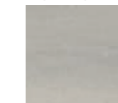
9,7X119cm 4"X47"



4,7X59,7cm 2"X24"

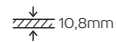


14,7X14,7cm 6"X6"



MONOCALIBER AND FULLY MODULAR FOR ALL SIZES [2mm joint]
 MONOCALIBRE E TOTALMENTE MODULAR PARA TODOS OS FORMATOS [2mm joint]

GRANITY AIR ARTIC



89X89cm 35"X35"



** POLISHED | POLI | POLIDO - FM2998PO
 MATT | MATE [R10A] - FM1114MT
 HAMMERED EFFECT | BOUCHARDÉ | BUJARDADO [R11C] - FM1121EF
 STONE | PIERRE | PEDRA [R12C] - FM1131ST

29,7X89cm 12"X35"



** POLISHED | POLI | POLIDO - FM2999PO
 MATT | MATE [R10A] - FM2742MT
 HAMMERED EFFECT | BOUCHARDÉ | BUJARDADO [R11C] - FM2752EF
 STONE | PIERRE | PEDRA [R12C] - FM2762ST

29,7X29,7cm 12"X12"



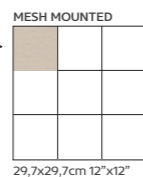
POLISHED | POLI | POLIDO - FM1674PO
 MATT | MATE [R10A] - FM1650MT
 HAMMERED EFFECT | BOUCHARDÉ | BUJARDADO [R11C] - FM1654EF
 STONE | PIERRE | PEDRA [R12C] - FM1661ST

9,7X9,7cm 4"X4"



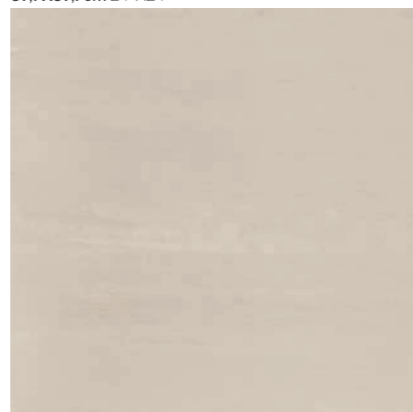
POLISHED | POLI | POLIDO - FM1147PO
 MATT | MATE [R10A] - FM1651MT
 HAMMERED EFFECT | BOUCHARDÉ | BUJARDADO [R11C] - FM1128EF
 STONE | PIERRE | PEDRA [R12C] - FM1134ST

AVAILABLE IN MESH



29,7x29,7cm 12"x12"

59,7X59,7cm 24"X24"



POLISHED | POLI | POLIDO - FM1668PO
 MATT | MATE [R10A] - FM1644MT
 HAMMERED EFFECT | BOUCHARDÉ | BUJARDADO [R11C] - FM1652EF
 STONE | PIERRE | PEDRA [R12C] - FM1655ST

29,7X59,7cm 12"X24"



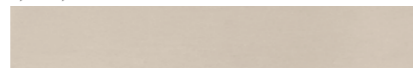
POLISHED | POLI | POLIDO - FM1669PO
 MATT | MATE [R10A] - FM1645MT
 HAMMERED EFFECT | BOUCHARDÉ | BUJARDADO [R11C] - FM1653EF
 STONE | PIERRE | PEDRA [R12C] - FM1656ST

14,7X59,7cm 6"X24"



POLISHED | POLI | POLIDO - FM1670PO
 MATT | MATE [R10A] - FM1646MT
 HAMMERED EFFECT | BOUCHARDÉ | BUJARDADO [R11C] - FM1123EF
 STONE | PIERRE | PEDRA [R12C] - FM1657ST

9,7X59,7cm 4"X24"



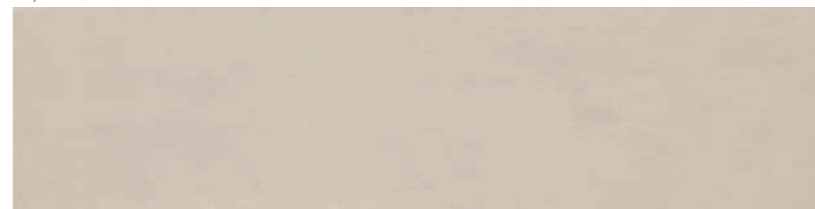
POLISHED | POLI | POLIDO - FM1671PO
 MATT | MATE [R10A] - FM1647MT
 HAMMERED EFFECT | BOUCHARDÉ | BUJARDADO [R11C] - FM1124EF
 STONE | PIERRE | PEDRA [R12C] - FM1658ST

59,7X119cm 24"X47"



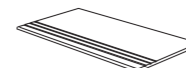
POLISHED | POLI | POLIDO - FM1141PO
 MATT | MATE [R10A] - FM1111MT
 HAMMERED EFFECT | BOUCHARDÉ | BUJARDADO [R11C] - FM1119EF
 STONE | PIERRE | PEDRA [R12C] - FM1129ST

29,7X119cm 12"X47"



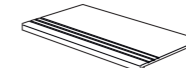
POLISHED | POLI | POLIDO - FM1142PO
 MATT | MATE [R10A] - FM1112MT
 HAMMERED EFFECT | BOUCHARDÉ | BUJARDADO [R11C] - FM1120EF
 STONE | PIERRE | PEDRA [R12C] - FM1130ST

GROOVED ROUNDED STEP
 DEGRAU BOLEADO SULCADO



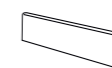
29,7x29,7cm 12"x12"
 29,7x59,7cm 12"x24"

GROOVED STEP WITH RISER PIECE
 DEGRAU SULCADO COM ESPELHO



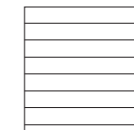
29,7x59,7cm 12"x24"

SKIRTING
 RODAPÉ



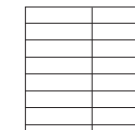
7x29,7cm 3"x12"
 7x59,7cm 3"x24"
 7x89cm 3"x35"

MESH 8



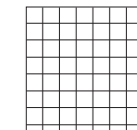
29,7x29,7cm 12"x12"

MESH 16



29,7x29,7cm 12"x12"

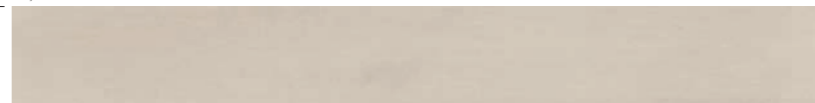
MESH 64



29,7x29,7cm 12"x12"

SIZES AVAILABLE UNDER REQUEST
 FORMATOS DISPONÍVEIS SOB CONSULTA

14,7X119cm 6"X47"



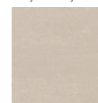
9,7X119cm 4"X47"



4,7X59,7cm 2"X24"



14,7X14,7cm 6"X6"



MONOCALIBER AND FULLY MODULAR FOR ALL SIZES [2mm joint]
 MONOCALIBRE E TOTALMENTE MODULAR PARA TODOS OS FORMATOS [2mm joint]

GRANITY AIR^{WHITE}

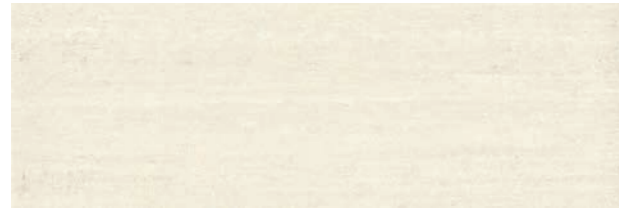
10,8mm

89X89cm 35"X35"



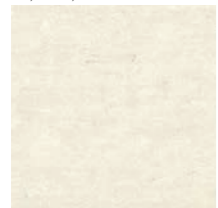
** POLISHED | POLI | POLIDO - FM3000PO
 MATT | MATE [R10A] - FM2597MT
 HAMMERED EFFECT | BOUCHARDÉ | BUJARDADO [R11C] - FM2599EF
 STONE | PIERRE | PEDRA [R12C] - FM2598ST

29,7X89cm 12"X35"



** POLISHED | POLI | POLIDO - FM2920PO
 MATT | MATE [R10A] - FM2746MT
 HAMMERED EFFECT | BOUCHARDÉ | BUJARDADO [R11C] - FM2756EF
 STONE | PIERRE | PEDRA [R12C] - FM2766ST

29,7X29,7cm 12"X12"



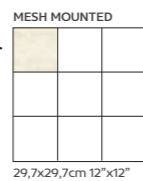
POLISHED | POLI | POLIDO - FM2674PO
 MATT | MATE [R10A] - FM2664MT
 HAMMERED EFFECT | BOUCHARDÉ | BUJARDADO [R11C] - FM2659EF
 STONE | PIERRE | PEDRA [R12C] - FM2669ST

9,7X9,7cm 4"X4"



POLISHED | POLI | POLIDO - FM2654PO
 MATT | MATE [R10A] - FM2644MT
 HAMMERED EFFECT | BOUCHARDÉ | BUJARDADO [R11C] - FM2639EF
 STONE | PIERRE | PEDRA [R12C] - FM2649ST

AVAILABLE IN MESH



29,7x29,7cm 12"x12"

59,7X59,7cm 24"X24"



POLISHED | POLI | POLIDO - FM2622PO
 MATT | MATE [R10A] - FM2621MT
 HAMMERED EFFECT | BOUCHARDÉ | BUJARDADO [R11C] - FM2736EF
 STONE | PIERRE | PEDRA [R12C] - FM2737ST

29,7X59,7cm 12"X24"



POLISHED | POLI | POLIDO - FM2735PO
 MATT | MATE [R10A] - FM2725MT
 HAMMERED EFFECT | BOUCHARDÉ | BUJARDADO [R11C] - FM2720EF
 STONE | PIERRE | PEDRA [R12C] - FM2730ST

14,7X59,7cm 6"X24"



POLISHED | POLI | POLIDO - FM2715PO
 MATT | MATE [R10A] - FM2705MT
 HAMMERED EFFECT | BOUCHARDÉ | BUJARDADO [R11C] - FM2700EF
 STONE | PIERRE | PEDRA [R12C] - FM2710ST

9,7X59,7cm 4"X24"



POLISHED | POLI | POLIDO - FM2695PO
 MATT | MATE [R10A] - FM2685MT
 HAMMERED EFFECT | BOUCHARDÉ | BUJARDADO [R11C] - FM2680EF
 STONE | PIERRE | PEDRA [R12C] - FM2690ST

GRANITY AIR^{WHITE}

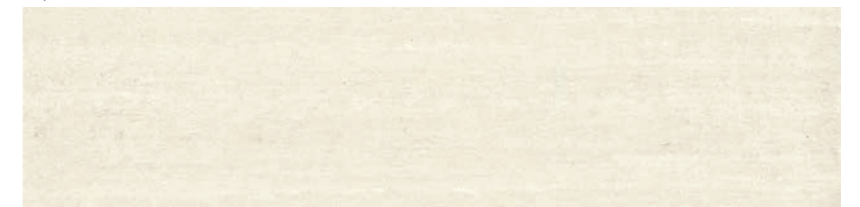
10,8mm

59,7X119cm 24"X47"



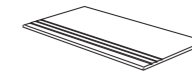
POLISHED | POLI | POLIDO - FM2802PO
 MATT | MATE [R10A] - FM2796MT
 HAMMERED EFFECT | BOUCHARDÉ | BUJARDADO [R11C] - FM2795EF
 STONE | PIERRE | PEDRA [R12C] - FM2797ST

29,7X119cm 12"X47"



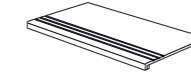
POLISHED | POLI | POLIDO - FM2791PO
 MATT | MATE [R10A] - FM2780MT
 HAMMERED EFFECT | BOUCHARDÉ | BUJARDADO [R11C] - FM2775EF
 STONE | PIERRE | PEDRA [R12C] - FM2785ST

GROOVED ROUNDED STEP
 DEGRAU BOLEADO SULCADO



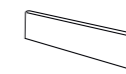
29,7x29,7cm 12"x12"
 29,7x59,7cm 12"x24"

GROOVED STEP WITH RISER PIECE
 DEGRAU SULCADO COM ESPELHO



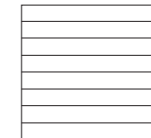
29,7x59,7cm 12"x24"

SKIRTING
 RODAPÉ



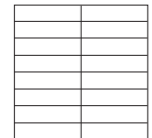
7x29,7cm 3"x12"
 7x59,7cm 3"x24"
 7x89cm 3"x35"

MESH 8



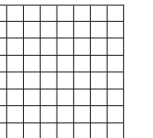
29,7x29,7cm 12"x12"

MESH 16



29,7x29,7cm 12"x12"

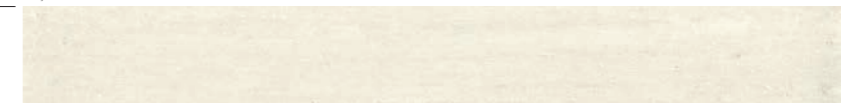
MESH 64



29,7x29,7cm 12"x12"

SIZES AVAILABLE UNDER REQUEST
 FORMATOS DISPONÍVEIS SOB CONSULTA

14,7X119cm 6"X47"



9,7X119cm 4"X47"



4,7X59,7cm 2"X24"



14,7X14,7cm 6"X6"



MONOCALIBRE AND FULLY MODULAR FOR ALL SIZES [2mm joint]
 MONOCALIBRE E TOTALMENTE MODULAR PARA TODOS OS FORMATOS [2mm joint]

GRANITY AIR BEIGE

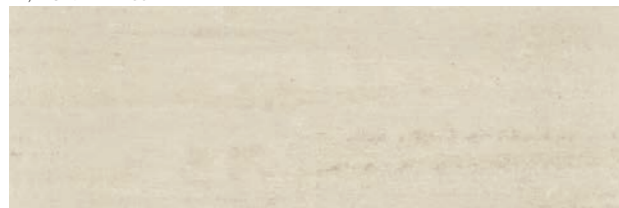
10,8mm

89X89cm 35"X35"



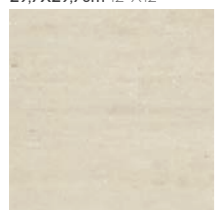
** POLISHED | POLI | POLIDO - FM3001PO
 MATT | MATE [R10A] - FM2624MT
 HAMMERED EFFECT | BOUCHARDÉ | BUJARDADO [R11C] - FM2625EF
 STONE | PIERRE | PEDRA [R12C] - FM2626ST

29,7X89cm 12"X35"



** POLISHED | POLI | POLIDO - FM3002PO
 MATT | MATE [R10A] - FM2747MT
 HAMMERED EFFECT | BOUCHARDÉ | BUJARDADO [R11C] - FM2757EF
 STONE | PIERRE | PEDRA [R12C] - FM2767ST

29,7X29,7cm 12"X12"



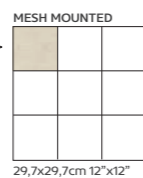
POLISHED | POLI | POLIDO - FM2670PO
 MATT | MATE [R10A] - FM2660MT
 HAMMERED EFFECT | BOUCHARDÉ | BUJARDADO [R11C] - FM2655EF
 STONE | PIERRE | PEDRA [R12C] - FM2665ST

9,7X9,7cm 4"X4"



POLISHED | POLI | POLIDO - FM2650PO
 MATT | MATE [R10A] - FM2640MT
 HAMMERED EFFECT | BOUCHARDÉ | BUJARDADO [R11C] - FM2635EF
 STONE | PIERRE | PEDRA [R12C] - FM2645ST

AVAILABLE IN MESH

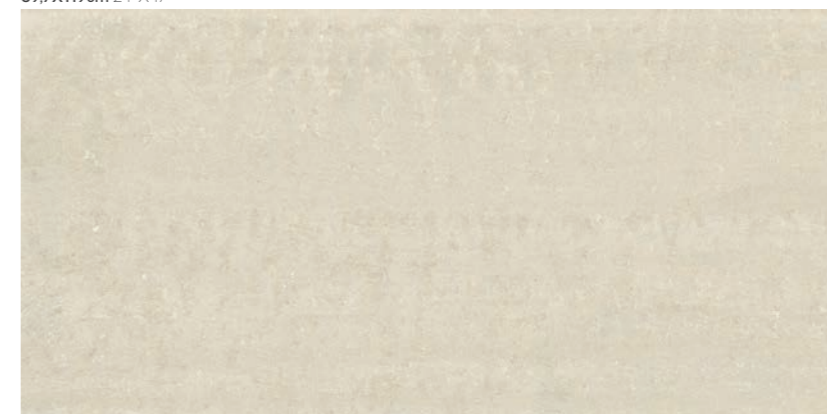


** FINISHING AVAILABLE UNDER REQUEST
 ** ACABAMENTO DISPONÍVEL SOB CONSULTA

GRANITY AIR BEIGE

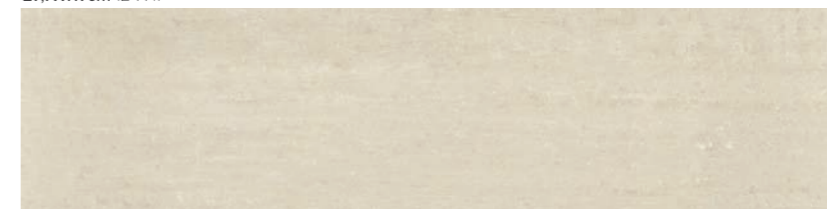
10,8mm

59,7X119cm 24"X47"



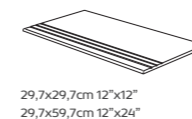
POLISHED | POLI | POLIDO - FM2798PO
 MATT | MATE [R10A] - FM2615MT
 HAMMERED EFFECT | BOUCHARDÉ | BUJARDADO [R11C] - FM2610EF
 STONE | PIERRE | PEDRA [R12C] - FM2612ST

29,7X119cm 12"X47"



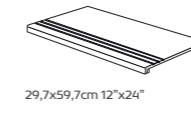
POLISHED | POLI | POLIDO - FM2790PO
 MATT | MATE [R10A] - FM2779MT
 HAMMERED EFFECT | BOUCHARDÉ | BUJARDADO [R11C] - FM2774EF
 STONE | PIERRE | PEDRA [R12C] - FM2784ST

GROOVED ROUNDED STEP
 DEGRAU BOLEADO SULCADO



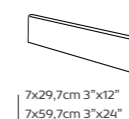
29,7x29,7cm 12"x12"
 29,7x59,7cm 12"x24"

GROOVED STEP WITH RISER PIECE
 DEGRAU SULCADO COM ESPELHO



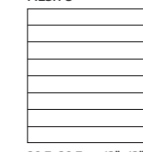
29,7x59,7cm 12"x24"

SKIRTING
 RODAPÉ



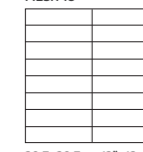
7x29,7cm 3"x12"
 7x59,7cm 3"x24"
 7x89cm 3"x35"

MESH 8



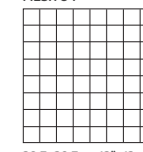
29,7x29,7cm 12"x12"

MESH 16



29,7x29,7cm 12"x12"

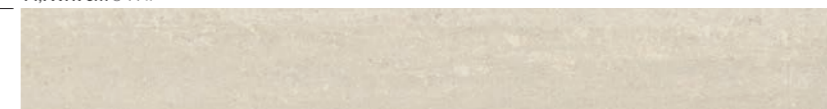
MESH 64



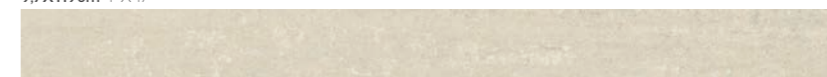
29,7x29,7cm 12"x12"

SIZES AVAILABLE UNDER REQUEST
 FORMATOS DISPONÍVEIS SOB CONSULTA

14,7X119cm 6"X47"



9,7X119cm 4"X47"



4,7X59,7cm 2"X24"



14,7X14,7cm 6"X6"



MONOCALIBER AND FULLY MODULAR FOR ALL SIZES [2mm joint]
 MONOCALIBRE E TOTALMENTE MODULAR PARA TODOS OS FORMATOS [2mm joint]

GRANITY AIRSEPIA

10,8mm

89X89cm 35"X35"



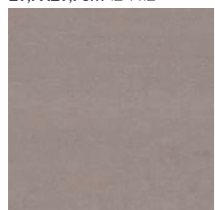
** POLISHED | POLI | POLIDO - FM2930PO
 MATT | MATE [R10A] - FM2630MT
 HAMMERED EFFECT | BOUCHARDÉ | BUJARDADO [R11C] - FM2632EF
 STONE | PIERRE | PEDRA [R12C] - FM2631ST

29,7X89cm 12"X35"



** POLISHED | POLI | POLIDO - FM2925PO
 MATT | MATE [R10A] - FM2750MT
 HAMMERED EFFECT | BOUCHARDÉ | BUJARDADO [R11C] - FM2760EF
 STONE | PIERRE | PEDRA [R12C] - FM2770ST

29,7X29,7cm 12"X12"



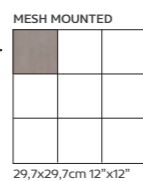
POLISHED | POLI | POLIDO - FM2672PO
 MATT | MATE [R10A] - FM2662MT
 HAMMERED EFFECT | BOUCHARDÉ | BUJARDADO [R11C] - FM2657EF
 STONE | PIERRE | PEDRA [R12C] - FM2667ST

9,7X9,7cm 4"X4"



POLISHED | POLI | POLIDO - FM2652PO
 MATT | MATE [R10A] - FM2642MT
 HAMMERED EFFECT | BOUCHARDÉ | BUJARDADO [R11C] - FM2637EF
 STONE | PIERRE | PEDRA [R12C] - FM2647ST

AVAILABLE IN MESH

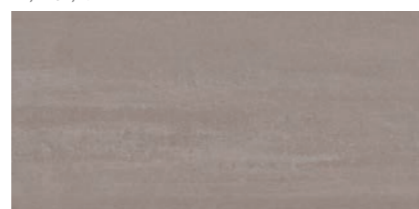


59,7X59,7cm 24"X24"



POLISHED | POLI | POLIDO - FM2741PO
 MATT | MATE [R10A] - FM2608MT
 HAMMERED EFFECT | BOUCHARDÉ | BUJARDADO [R11C] - FM2634EF
 STONE | PIERRE | PEDRA [R12C] - FM2633ST

29,7X59,7cm 12"X24"



POLISHED | POLI | POLIDO - FM2733PO
 MATT | MATE [R10A] - FM2723MT
 HAMMERED EFFECT | BOUCHARDÉ | BUJARDADO [R11C] - FM2718EF
 STONE | PIERRE | PEDRA [R12C] - FM2728ST

14,7X59,7cm 6"X24"



POLISHED | POLI | POLIDO - FM2713PO
 MATT | MATE [R10A] - FM2703MT
 HAMMERED EFFECT | BOUCHARDÉ | BUJARDADO [R11C] - FM2698EF
 STONE | PIERRE | PEDRA [R12C] - FM2708ST

9,7X59,7cm 4"X24"



POLISHED | POLI | POLIDO - FM2693PO
 MATT | MATE [R10A] - FM2683MT
 HAMMERED EFFECT | BOUCHARDÉ | BUJARDADO [R11C] - FM2678EF
 STONE | PIERRE | PEDRA [R12C] - FM2688ST

GRANITY AIRSEPIA

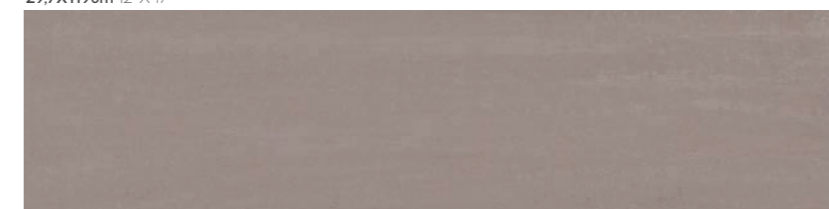
10,8mm

59,7X119cm 24"X47"



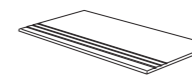
POLISHED | POLI | POLIDO - FM2800PO
 MATT | MATE [R10A] - FM2613MT
 HAMMERED EFFECT | BOUCHARDÉ | BUJARDADO [R11C] - FM2609EF
 STONE | PIERRE | PEDRA [R12C] - FM2611ST

29,7X119cm 12"X47"



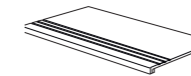
POLISHED | POLI | POLIDO - FM2793PO
 MATT | MATE [R10A] - FM2782MT
 HAMMERED EFFECT | BOUCHARDÉ | BUJARDADO [R11C] - FM2777EF
 STONE | PIERRE | PEDRA [R12C] - FM2787ST

GROOVED ROUNDED STEP
 DEGRAU BOLEADO SULCADO



29,7x29,7cm 12"x12"
 29,7x59,7cm 12"x24"

GROOVED STEP WITH RISER PIECE
 DEGRAU SULCADO COM ESPELHO



29,7x59,7cm 12"x24"

SKIRTING
 RODAPÉ



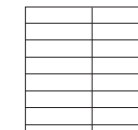
7x29,7cm 3"x12"
 7x59,7cm 3"x24"
 7x89cm 3"x35"

MESH 8



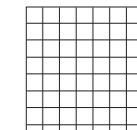
29,7x29,7cm 12"x12"

MESH 16



29,7x29,7cm 12"x12"

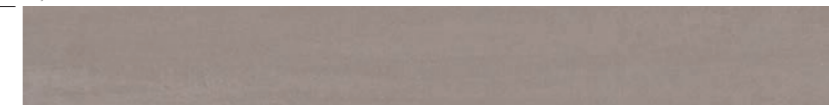
MESH 64



29,7x29,7cm 12"x12"

SIZES AVAILABLE UNDER REQUEST
 FORMATOS DISPONÍVEIS SOB CONSULTA

14,7X119cm 6"X47"



9,7X119cm 4"X47"



4,7X59,7cm 2"X24"



14,7X14,7cm 6"X6"



MONOCALIBER AND FULLY MODULAR FOR ALL SIZES [2mm joint]
 MONOCALIBRE E TOTALMENTE MODULAR PARA TODOS OS FORMATOS [2mm joint]

GRANITY AIRSOIL

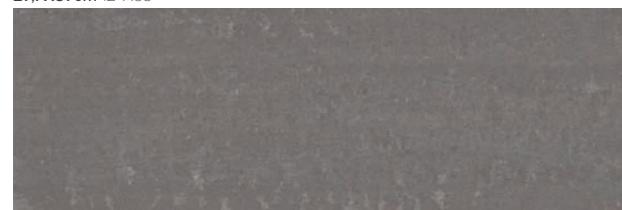
10,8mm

89X89cm 35"X35"



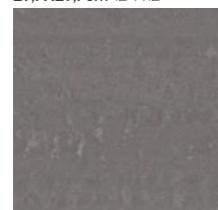
** POLISHED | POLI | POLIDO - FM3003PO
 MATT | MATE [R10A] - FM2627MT
 HAMMERED EFFECT | BOUCHARDÉ | BUJARDADO [R11C] - FM2629EF
 STONE | PIERRE | PEDRA [R12C] - FM2628ST

29,7X89cm 12"X35"



** POLISHED | POLI | POLIDO - FM3004PO
 MATT | MATE [R10A] - FM2749MT
 HAMMERED EFFECT | BOUCHARDÉ | BUJARDADO [R11C] - FM2759EF
 STONE | PIERRE | PEDRA [R12C] - FM2769ST

29,7X29,7cm 12"X12"



POLISHED | POLI | POLIDO - FM2673PO
 MATT | MATE [R10A] - FM2663MT
 HAMMERED EFFECT | BOUCHARDÉ | BUJARDADO [R11C] - FM2658EF
 STONE | PIERRE | PEDRA [R12C] - FM2668ST

9,7X9,7cm 4"X4"



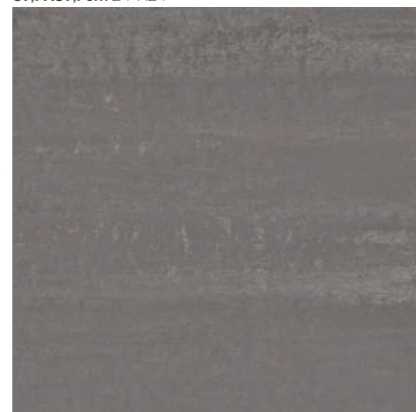
AVAILABLE IN MESH



POLISHED | POLI | POLIDO - FM2653PO
 MATT | MATE [R10A] - FM2643MT
 HAMMERED EFFECT | BOUCHARDÉ | BUJARDADO [R11C] - FM2638EF
 STONE | PIERRE | PEDRA [R12C] - FM2648ST

29,7x29,7cm 12"x12"

59,7X59,7cm 24"X24"



POLISHED | POLI | POLIDO - FM2740PO
 MATT | MATE [R10A] - FM2588MT
 HAMMERED EFFECT | BOUCHARDÉ | BUJARDADO [R11C] - FM2594EF
 STONE | PIERRE | PEDRA [R12C] - FM2591ST

29,7X59,7cm 12"X24"



POLISHED | POLI | POLIDO - FM2734PO
 MATT | MATE [R10A] - FM2724MT
 HAMMERED EFFECT | BOUCHARDÉ | BUJARDADO [R11C] - FM2719EF
 STONE | PIERRE | PEDRA [R12C] - FM2729ST

14,7X59,7cm 6"X24"



POLISHED | POLI | POLIDO - FM2714PO
 MATT | MATE [R10A] - FM2704MT
 HAMMERED EFFECT | BOUCHARDÉ | BUJARDADO [R11C] - FM2699EF
 STONE | PIERRE | PEDRA [R12C] - FM2709ST

9,7X59,7cm 4"X24"



POLISHED | POLI | POLIDO - FM2694PO
 MATT | MATE [R10A] - FM2684MT
 HAMMERED EFFECT | BOUCHARDÉ | BUJARDADO [R11C] - FM2679EF
 STONE | PIERRE | PEDRA [R12C] - FM2689ST

GRANITY AIRSOIL

10,8mm

59,7X119cm 24"X47"



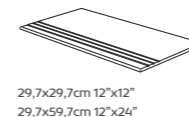
POLISHED | POLI | POLIDO - FM2801PO
 MATT | MATE [R10A] - FM2614MT
 HAMMERED EFFECT | BOUCHARDÉ | BUJARDADO [R11C] - FM2616EF
 STONE | PIERRE | PEDRA [R12C] - FM2618ST

29,7X119cm 12"X47"



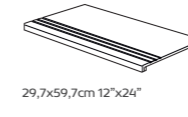
POLISHED | POLI | POLIDO - FM2792PO
 MATT | MATE [R10A] - FM2781MT
 HAMMERED EFFECT | BOUCHARDÉ | BUJARDADO [R11C] - FM2776EF
 STONE | PIERRE | PEDRA [R12C] - FM2786ST

GROOVED ROUNDED STEP
 DEGRAU BOLEADO SULCADO



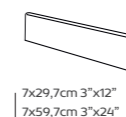
29,7x29,7cm 12"x12"
 29,7x59,7cm 12"x24"

GROOVED STEP WITH RISER PIECE
 DEGRAU SULCADO COM ESPELHO



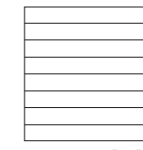
29,7x59,7cm 12"x24"

SKIRTING
 RODAPÉ



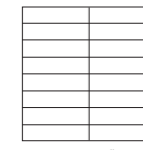
7x29,7cm 3"x12"
 7x59,7cm 3"x24"
 7x89cm 3"x35"

MESH 8



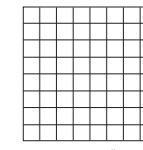
29,7x29,7cm 12"x12"

MESH 16



29,7x29,7cm 12"x12"

MESH 64



29,7x29,7cm 12"x12"

SIZES AVAILABLE UNDER REQUEST
 FORMATOS DISPONÍVEIS SOB CONSULTA

14,7X119cm 6"X47"



9,7X119cm 4"X47"



4,7X59,7cm 2"X24"



14,7X14,7cm 6"X6"



MONOCALIBER AND FULLY MODULAR FOR ALL SIZES [2mm joint]
 MONOCALIBRE E TOTALMENTE MODULAR PARA TODOS OS FORMATOS [2mm joint]

GRANITY AIRCOCOA

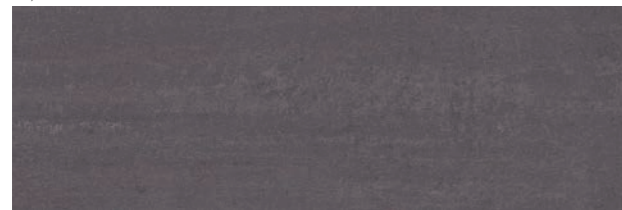
10,8mm

89X89cm 35"X35"



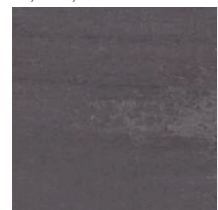
** POLISHED | POLI | POLIDO - FM3005PO
 MATT | MATE [R10A] - FM2772MT
 HAMMERED EFFECT | BOUCHARDÉ | BUJARDADO [R11C] - FM2771EF
 STONE | PIERRE | PEDRA [R12C] - FM2773ST

29,7X89cm 12"X35"



** POLISHED | POLI | POLIDO - FM3006PO
 MATT | MATE [R10A] - FM2748MT
 HAMMERED EFFECT | BOUCHARDÉ | BUJARDADO [R11C] - FM2758EF
 STONE | PIERRE | PEDRA [R12C] - FM2768ST

29,7X29,7cm 12"X12"



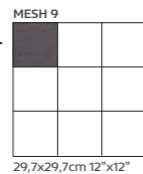
POLISHED | POLI | POLIDO - FM2671PO
 MATT | MATE [R10A] - FM2661MT
 HAMMERED EFFECT | BOUCHARDÉ | BUJARDADO [R11C] - FM2656EF
 STONE | PIERRE | PEDRA [R12C] - FM2666ST

9,7X9,7cm 4"X4"

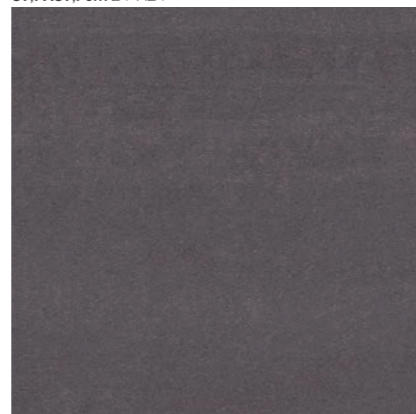


POLISHED | POLI | POLIDO - FM2651PO
 MATT | MATE [R10A] - FM2641MT
 HAMMERED EFFECT | BOUCHARDÉ | BUJARDADO [R11C] - FM2636EF
 STONE | PIERRE | PEDRA [R12C] - FM2646ST

AVAILABLE IN MESH

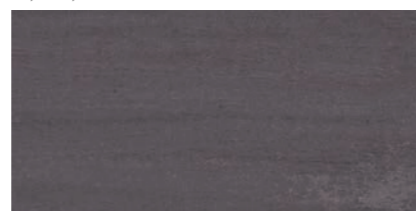


59,7X59,7cm 24"X24"



POLISHED | POLI | POLIDO - FM2739PO
 MATT | MATE [R10A] - FM2590MT
 HAMMERED EFFECT | BOUCHARDÉ | BUJARDADO [R11C] - FM2596EF
 STONE | PIERRE | PEDRA [R12C] - FM2593ST

29,7X59,7cm 12"X24"



POLISHED | POLI | POLIDO - FM2732PO
 MATT | MATE [R10A] - FM2722MT
 HAMMERED EFFECT | BOUCHARDÉ | BUJARDADO [R11C] - FM2717EF
 STONE | PIERRE | PEDRA [R12C] - FM2727ST

14,7X59,7cm 6"X24"



POLISHED | POLI | POLIDO - FM2712PO
 MATT | MATE [R10A] - FM2702MT
 HAMMERED EFFECT | BOUCHARDÉ | BUJARDADO [R11C] - FM2697EF
 STONE | PIERRE | PEDRA [R12C] - FM2707ST

9,7X59,7cm 4"X24"



POLISHED | POLI | POLIDO - FM2692PO
 MATT | MATE [R10A] - FM2682MT
 HAMMERED EFFECT | BOUCHARDÉ | BUJARDADO [R11C] - FM2677EF
 STONE | PIERRE | PEDRA [R12C] - FM2687ST

GRANITY AIRCOCOA

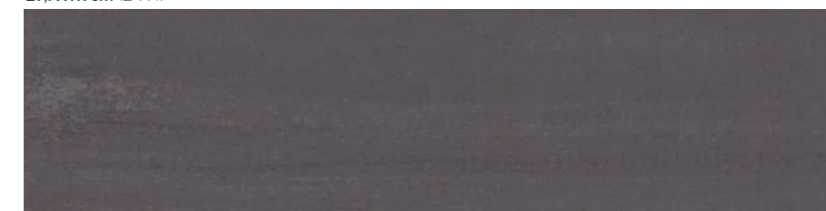
10,8mm

59,7X119cm 24"X47"



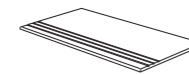
POLISHED | POLI | POLIDO - FM2799PO
 MATT | MATE [R10A] - FM2620MT
 HAMMERED EFFECT | BOUCHARDÉ | BUJARDADO [R11C] - FM2617EF
 STONE | PIERRE | PEDRA [R12C] - FM2619ST

29,7X119cm 12"X47"



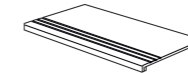
POLISHED | POLI | POLIDO - FM2794PO
 MATT | MATE [R10A] - FM2783MT
 HAMMERED EFFECT | BOUCHARDÉ | BUJARDADO [R11C] - FM2778EF
 STONE | PIERRE | PEDRA [R12C] - FM2788ST

GROOVED ROUNDED STEP
 DEGRAU BOLEADO SULCADO



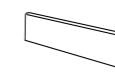
29,7x29,7cm 12"x12"
 29,7x59,7cm 12"x24"

GROOVED STEP WITH RISER PIECE
 DEGRAU SULCADO COM ESPELHO



29,7x59,7cm 12"x24"

SKIRTING
 RODAPÉ



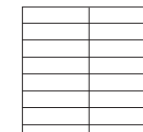
7x29,7cm 3"x12"
 7x59,7cm 3"x24"
 7x89cm 3"x35"

MESH 8



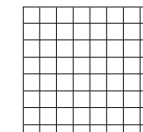
29,7x29,7cm 12"x12"

MESH 16



29,7x29,7cm 12"x12"

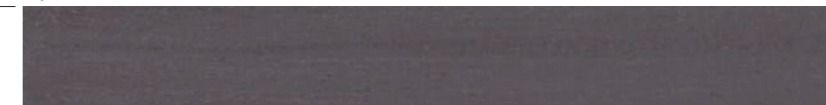
MESH 64



29,7x29,7cm 12"x12"

SIZES AVAILABLE UNDER REQUEST
 FORMATOS DISPONÍVEIS SOB CONSULTA

14,7X119cm 6"X47"



9,7X119cm 4"X47"



4,7X59,7cm 2"X24"



14,7X14,7cm 6"X6"



MONOCALIBER AND FULLY MODULAR FOR ALL SIZES [2mm joint]
 MONOCALIBRE E TOTALMENTE MODULAR PARA TODOS OS FORMATOS [2mm joint]

TECHNICAL FEATURES

MATERIAL:

UNGLAZED DOUBLE-LOADED PORCELAIN STONEWARE

PRODUCTION:

DOUBLE-LOADING TECHNOLOGY WITH POWDER HOMOGENIZATION AND HIGH GRANULOMETRY REDUCTION [$\leq 150 \mu\text{m}$]

HYDRAULIC ISOSTATIC VERTICAL PRESSING [$\geq 500\text{Kg/cm}^2$]

SINGLE FIRING WITH EXTRA LONG CYCLE AND HIGH TEMPERATURE [1220-1230 °C]

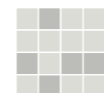
AUTOMATIC SQUARING AND RECTIFYING OPERATIONS FOR ALL PIECES

TECHNICAL FEATURES: DADOS TÉCNICOS:	STANDARDS NORMAS	STANDARDS SPECIFICATIONS VALORES DA NORMA	GRANITY AIR COLLECTION AVERAGE VALUES VALORES MÉDIOS
LENGTH AND WIDTH TOLERANCE DESVIO MÁXIMO PARA COMPRIMENTO E LARGURA		$\pm 0,6 \%$	$\pm 0,3 \%$
THICKNESS TOLERANCE DESVIO MÁXIMO PARA ESPESSURA		$\pm 5 \%$	$\pm 3 \%$
STRAIGHTNESS OF SIDES TOLERANCE DESVIO MÁXIMO DA RECTILINEARIDADE	ISO 10545-2	$\pm 0,5 \%$	$\pm 0,3 \%$
RECTANGULARITY TOLERANCE DESVIO MÁXIMO ORTOGONALIDADE		$\pm 0,5 \%$	$\pm 0,3 \%$
FLATNESS TOLERANCE DESVIO MÁXIMO PLANARIDADE		$\pm 0,5 \%$	$\pm 0,3 \%$
WATER ABSORPTION ABSORÇÃO DE ÁGUA	ISO 10545-3	$\leq 0,5 \%$	$< 0,1 \%$
MODULUS OF RUPTURE MÓDULO DE RUPTURA		$\geq 35 \text{ N/mm}^2$	$\geq 45 \text{ N/mm}^2$
BREAKING STRENGTH FORÇA DE RUPTURA	ISO 10545-4	$\geq 1300 \text{ N}$	$\geq 2500 \text{ N}$
DEEP ABRASION RESISTANCE RESISTÊNCIA À ABRASÃO PROFUNDA	ISO 10545-6	$\leq 175 \text{ mm}^3$	$\leq 130 \text{ mm}^3$
LINEAR THERMAL EXPANSION DILATAÇÃO TÉRMICA LINEAR	ISO 10545-8	DECLARED VALUE VALOR DECLARADO	$\leq 7 \times 10^{-6} / \text{K}^{\circ}$
THERMAL SHOCK RESISTANCE RESISTÊNCIA AO CHOQUE TÉRMICO	ISO 10545-9	ORDERED REQUERIDA	RESISTANT RESISTENTE
FROST RESISTANCE RESISTÊNCIA AO GELO	ISO 10545-12	ORDERED REQUERIDA	RESISTANT RESISTENTE
RESISTANCE TO CHEMICALS (ACIDS AND ALKALIS) RESISTÊNCIA AOS QUÍMICOS (ACIDOS E BASES)		DECLARED VALUE VALOR DECLARADO	CLASS LA CLASSE LA
RESISTANCE TO CHEMICALS (HOUSEHOLD CHEMICALS & SWIMMING POOL ADDITIVES) RESISTÊNCIA AOS QUÍMICOS (PRODUTOS QUÍMICOS DOMÉSTICOS E ADITIVOS PARA ÁGUA DE PISCINAS)	ISO 10545-13	MINIMUM CLASS B MÍNIMO CLASSE B	CLASS A CLASSE A
STAIN RESISTANCE RESISTÊNCIA À MANCHA	ISO 10545-14	DECLARED VALUE VALOR DECLARADO	5
SLIP RESISTANCE RESISTÊNCIA AO ESCORREGAMENTO			
	DIN 51097	CLASS A $\geq 12^{\circ}$ CLASS B $\geq 18^{\circ}$ CLASS C $\geq 24^{\circ}$	A MT MATT NATURAL C EF BUSH-HAMMERED EFFECT EFEITO BOJARDADO C ST STONE PEDRA
	DIN 51130	MIN R9 $6^{\circ} - 10^{\circ}$ MIN R10 $10^{\circ} - 19^{\circ}$ MIN R11 $19^{\circ} - 27^{\circ}$ MIN R12 $27^{\circ} - 35^{\circ}$ MIN R13 $> 35^{\circ}$	R10 MT MATT NATURAL R11 EF BUSH-HAMMERED EFFECT EFEITO BOJARDADO R12 ST STONE PEDRA

GRANITY AIR WHITE 29,7x29,7cm | 59,7x59,7cm | 89x89cm
| 9,7x59,7cm | 9,7x9,7cm
[MATT R10A]

GRANITY AIR COAL 89x89cm
[MATT R10A]

V3



MODERATE COLOR VARIATION
VARIÇÃO DE COR MODERADA

UPEC: THE "PURE" PRODUCTS MADE BY FERIB MASLARE CERTIFIED BY CSTB UNDER THE NF029. THE UPEC CERTIFICATION CAN BE FOUND ON WWW.CSTB.FR
OS PRODUTOS "PURE" FABRICADOS PELA FERIB MASLARE ESTÃO CERTIFICADOS PELO CSTB SOB O NÚMERO NF029. A CERTIFICAÇÃO UPEC PODE SER ENCONTRADA EM WWW.CSTB.FR





SOLID GREIGE 29,7X89cm
[MATT R9A]

SOLID GREIGE 89X89cm
[CEMENT R10A]

SOLID COLLECTION

10 COLORS
5 SIZES
3 SURFACES

The Solid collection is a new must, the state of the art in unglazed double-loaded porcelain stoneware. Its chromatic simplicity and unique textures are clearly meeting the trends of contemporary architecture.

This collection is the perfect product to design minimalist environments, being ideal, not only for residential use, but also for public places where high traffic is expected.

The Solid manufacturing starts with the hyper granulometric reduction operation, from where a grain diameter of less than 150µm is obtained. This thin powder is then homogeneously spread over another layer of non-reduced powder and both undergo a force of 500Kg per cm² carried out by a hydraulic isostatic vertical press.

Tiles are then fired at a temperature of 1230°C creating a very hard surface with an extra strong mechanical resistance. Automatic squaring and rectification operations are finally performed in all pieces to guarantee monocaliber and full modularity for all sizes.

Composed by five different sizes, ten colors and three different surfaces all in the same 10,8mm thickness, the Solid Collection is a suitable product for all applications including public projects where high traffic is expected.

A coleção Solid é uma obra-prima do grés porcelânico. Um produto não esmaltado de aparência uniforme, produzido em dupla carga.

A simplicidade e a sobriedade cromática da Solid vão ao encontro das necessidades da arquitectura contemporânea e estão em harmonia perfeita com ambientes minimalistas. É uma solução de valor para espaços residenciais e públicos, mesmo quando sujeitos a elevado tráfego.

O fabrico da Solid inicia-se com a operação de hiper redução granulométrica da qual resulta um grão com diâmetro inferior a 150µm. O pó fino é então uniformemente distribuído sobre outra camada de pó de granulometria normal, para serem ambos sujeitos a uma força de 500Kg por cm² através de uma operação de prensagem levada a cabo por prensas hidráulicas isostáticas verticais.

As peças são depois cozidas em ciclo longo a uma temperatura de 1230°C, originando uma superfície ultra compacta com os mais elevados níveis de resistência mecânica. Todos os produtos Solid são finalmente rectificadas por forma a garantir modularidade total para todos os formatos.

Composta por dez cores, três acabamentos, cinco formatos e sempre com espessura de 10,8mm, a Colecção Solid é válida para todas as aplicações, nomeadamente projectos públicos nos quais a existência de alto tráfego é uma certeza.



SOLID GRAPHITE 89X89cm
[MATT R9A]

SOLID GREIGE 29,7X89cm
[MATT R9A]

SOLID GREIGE 89X89cm
[CEMENT R10A]

SOLIDSURFACES

MATT R9A

↓
10,8mm
↑

CEMENT R10A

↓
10,8mm
↑

STONE R12C

10,8mm
↓
↑

SOLID BLACK

10,8mm

89X89cm 35"X35"



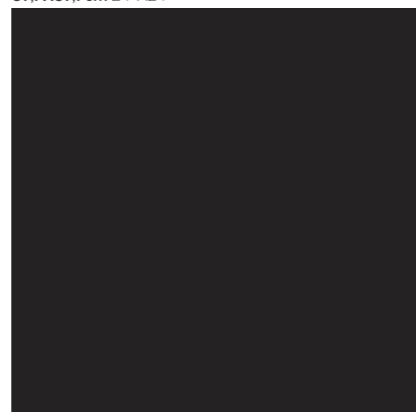
MATT | MATE [R9A] - FM607MT
CEMENT | CIMENTO [R10A] - FM623CM
STONE | PIERRE | PEDRA [R12C] - FM615ST

29,7X89cm 12"X35"



MATT | MATE [R9A] - FM609MT
CEMENT | CIMENTO [R10A] - FM625CM
STONE | PIERRE | PEDRA [R12C] - FM617ST

59,7X59,7cm 24"X24"



MATT | MATE [R9A] - FM610MT
CEMENT | CIMENTO [R10A] - FM626CM
STONE | PIERRE | PEDRA [R12C] - FM618ST

29,7X59,7cm 12"X24"

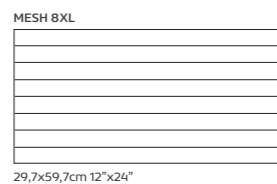
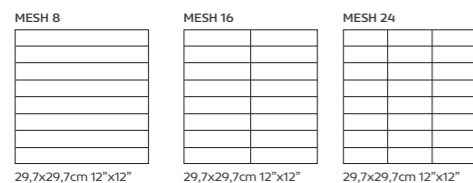


MATT | MATE [R9A] - FM2213MT
CEMENT | CIMENTO [R10A] - FM2250CM
STONE | PIERRE | PEDRA [R12C] - FM2249ST

9,7X9,7cm 4"X4"



MATT | MATE [R9A] - FM614MT
CEMENT | CIMENTO [R10A] - FM630CM
STONE | PIERRE | PEDRA [R12C] - FM622ST



MONOCALIBER AND FULLY MODULAR FOR ALL SIZES [2mm joint]
 MONOCALIBRE E TOTALMENTE MODULAR PARA TODOS OS FORMATOS [2mm joint]

SOLID GRAPHITE

10,8mm

59,7X59,7cm 24"X24"



MATT | MATE [R9A] - FM438MT
CEMENT | CIMENTO [R10A] - FM453CM
STONE | PIERRE | PEDRA [R12C] - FM445ST

29,7X59,7cm 12"X24"



MATT | MATE [R9A] - FM2192MT
CEMENT | CIMENTO [R10A] - FM2199CM
STONE | PIERRE | PEDRA [R12C] - FM2240ST

9,7X9,7cm 4"X4"



MATT | MATE [R9A] - FM442MT
CEMENT | CIMENTO [R10A] - FM457CM
STONE | PIERRE | PEDRA [R12C] - FM449ST

89X89cm 35"X35"

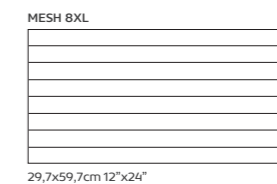
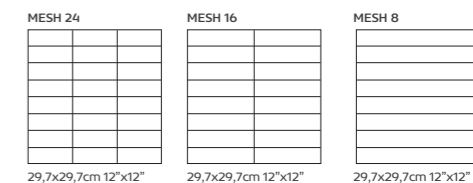


MATT | MATE [R9A] - FM435MT
CEMENT | CIMENTO [R10A] - FM450CM
STONE | PIERRE | PEDRA [R12C] - FM443ST

29,7X89cm 12"X35"



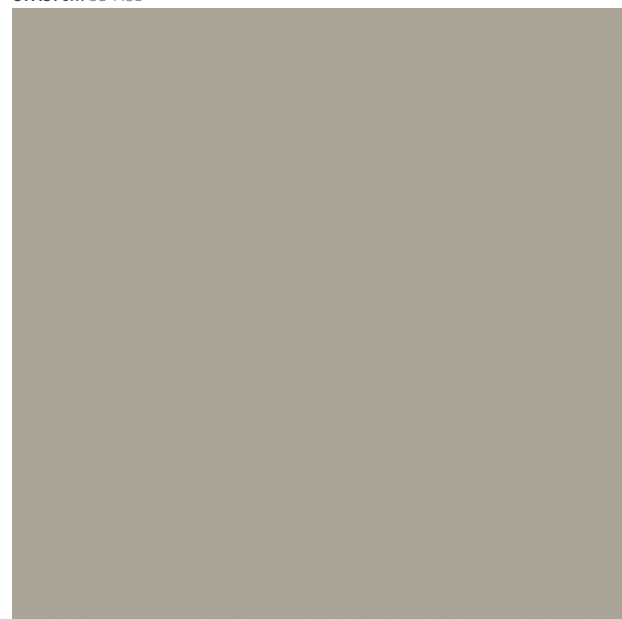
MATT | MATE [R9A] - FM437MT
CEMENT | CIMENTO [R10A] - FM452CM
STONE | PIERRE | PEDRA [R12C] - FM2959ST



MONOCALIBER AND FULLY MODULAR FOR ALL SIZES [2mm joint]
 MONOCALIBRE E TOTALMENTE MODULAR PARA TODOS OS FORMATOS [2mm joint]

10,8mm

89X89cm 35"X35"



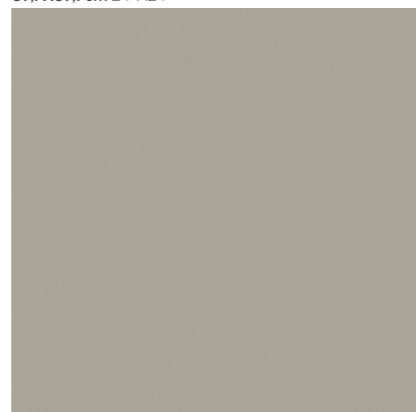
MATT | MATE [R9A] - FM479MT
CEMENT | CIMENTO [R10A] - FM495CM
STONE | PIERRE | PEDRA [R12C] - FM487ST

29,7X89cm 12"X35"



MATT | MATE [R9A] - FM481MT
CEMENT | CIMENTO [R10A] - FM3007CM
STONE | PIERRE | PEDRA [R12C] - FM489ST

59,7X59,7cm 24"X24"



MATT | MATE [R9A] - FM482MT
CEMENT | CIMENTO [R10A] - FM497CM
STONE | PIERRE | PEDRA [R12C] - FM490ST

29,7X59,7cm 12"X24"



MATT | MATE [R9A] - FM2218MT
CEMENT | CIMENTO [R10A] - FM2211CM
STONE | PIERRE | PEDRA [R12C] - FM2244ST

9,7X9,7cm 4"X4"



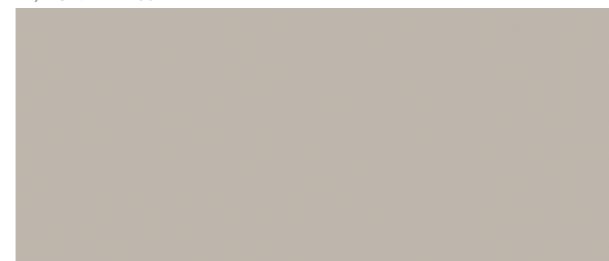
MATT | MATE [R9A] - FM486MT
CEMENT | CIMENTO [R10A] - FM501CM
STONE | PIERRE | PEDRA [R12C] - FM494ST

89X89cm 35"X35"



MATT | MATE [R9A] - FM502MT
CEMENT | CIMENTO [R10A] - FM517CM
STONE | PIERRE | PEDRA [R12C] - FM510ST

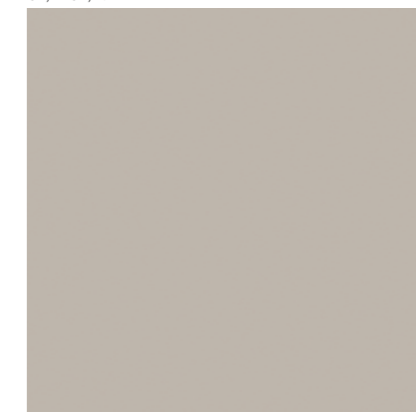
29,7X89cm 12"X35"



MATT | MATE [R9A] - FM504MT
CEMENT | CIMENTO [R10A] - FM519CM
STONE | PIERRE | PEDRA [R12C] - FM512ST

10,8mm

59,7X59,7cm 24"X24"



MATT | MATE [R9A] - FM505MT
CEMENT | CIMENTO [R10A] - FM520CM
STONE | PIERRE | PEDRA [R12C] - FM513ST

29,7X59,7cm 12"X24"

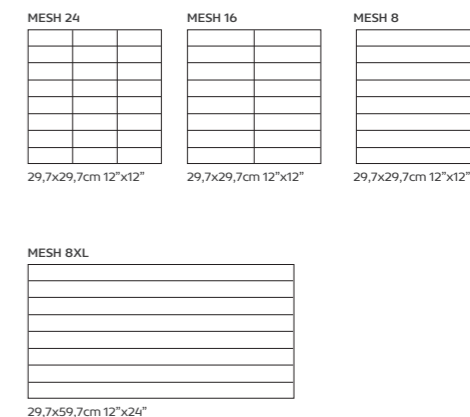
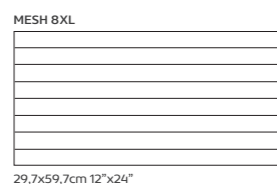
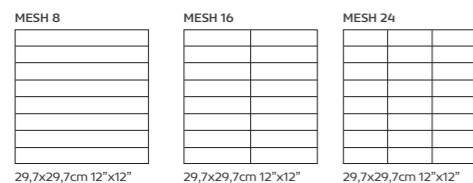


MATT | MATE [R9A] - FM2187MT
CEMENT | CIMENTO [R10A] - FM2245CM
STONE | PIERRE | PEDRA [R12C] - FM2246ST

9,7X9,7cm 4"X4"



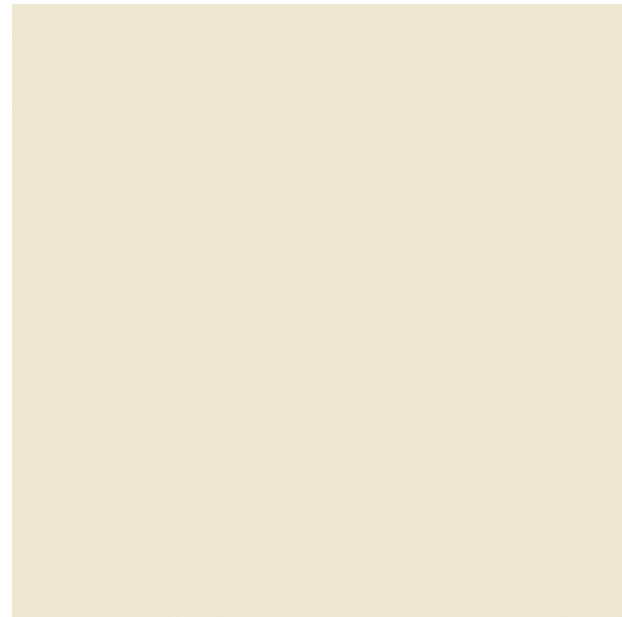
MATT | MATE [R9A] - FM509MT
CEMENT | CIMENTO [R10A] - FM523CM
STONE | PIERRE | PEDRA [R12C] - FM516ST



SOLIDiWHITE

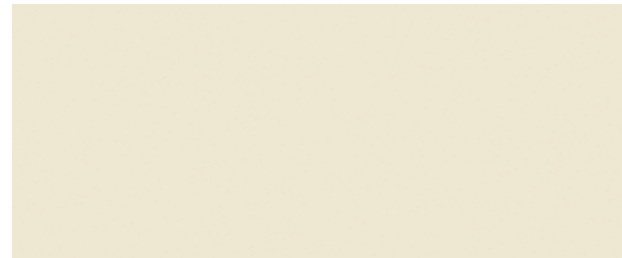
10,8mm

89X89cm 35"X35"



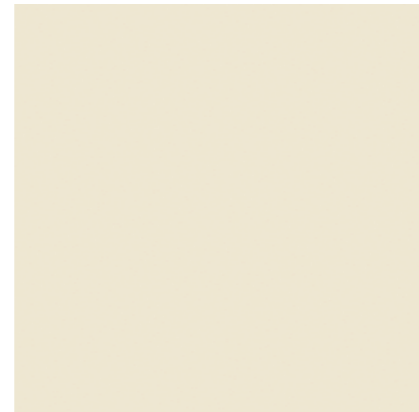
MATT | MATE [R9A] - FM673MT
CEMENT | CIMENTO [R10A] - FM687CM
STONE | PIERRE | PEDRA [R12C] - FM681ST

29,7X89cm 12"X35"



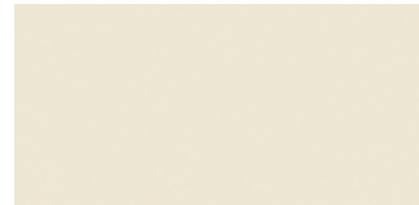
MATT | MATE [R9A] - FM675MT
CEMENT | CIMENTO [R10A] - FM689CM
STONE | PIERRE | PEDRA [R12C] - FM3131ST

59,7X59,7cm 24"X24"



MATT | MATE [R9A] - FM676MT
CEMENT | CIMENTO [R10A] - FM690CM
STONE | PIERRE | PEDRA [R12C] - FM683ST

29,7X59,7cm 12"X24"



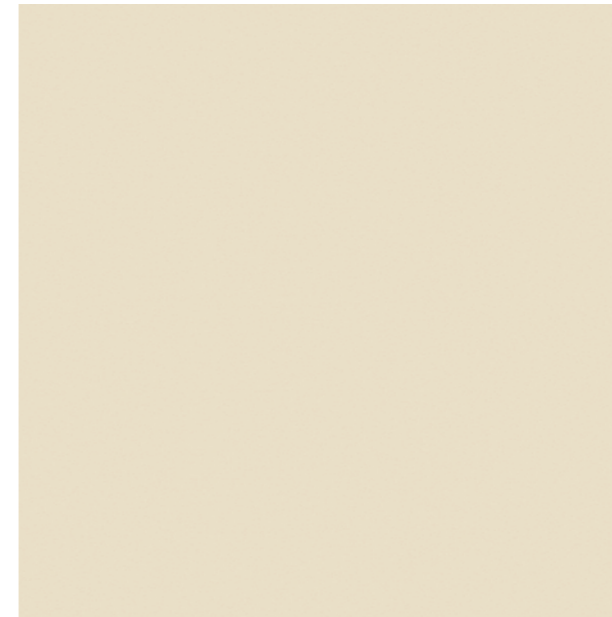
MATT | MATE [R9A] - FM2188MT
CEMENT | CIMENTO [R10A] - FM2177CM
STONE | PIERRE | PEDRA [R12C] - FM2253ST

9,7X9,7cm 4"X4"



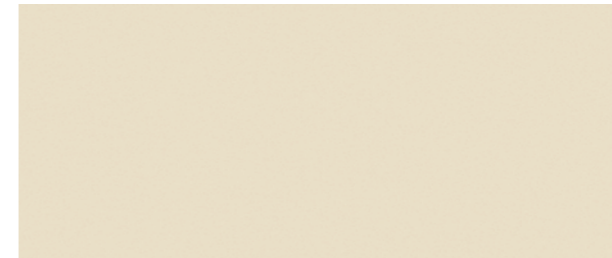
MATT | MATE [R9A] - FM680MT
CEMENT | CIMENTO [R10A] - FM693CM
STONE | PIERRE | PEDRA [R12C] - FM686ST

89X89cm 35"X35"



MATT | MATE [R9A] - FM631MT
CEMENT | CIMENTO [R10A] - FM645CM
STONE | PIERRE | PEDRA [R12C] - FM639ST

29,7X89cm 12"X35"



MATT | MATE [R9A] - FM633MT
CEMENT | CIMENTO [R10A] - FM647CM
STONE | PIERRE | PEDRA [R12C] - FM641ST

SOLIDWHITE

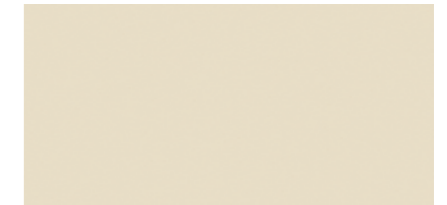
10,8mm

59,7X59,7cm 24"X24"



MATT | MATE [R9A] - FM634MT
CEMENT | CIMENTO [R10A] - FM648CM
STONE | PIERRE | PEDRA [R12C] - FM642ST

29,7X59,7cm 12"X24"

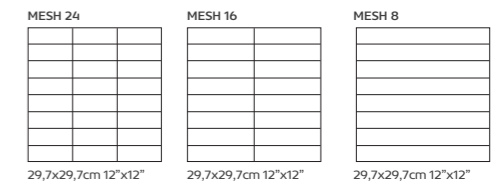
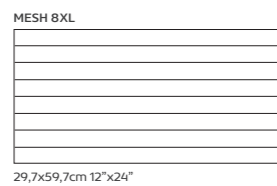
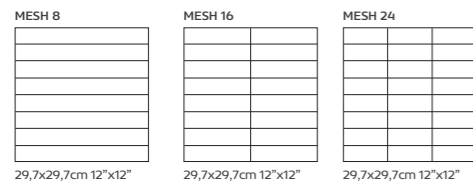


MATT | MATE [R9A] - FM2186MT
CEMENT | CIMENTO [R10A] - FM2220CM
STONE | PIERRE | PEDRA [R12C] - FM2219ST

9,7X9,7cm 4"X4"



MATT | MATE [R9A] - FM638MT
CEMENT | CIMENTO [R10A] - FM651CM
STONE | PIERRE | PEDRA [R12C] - FM644ST



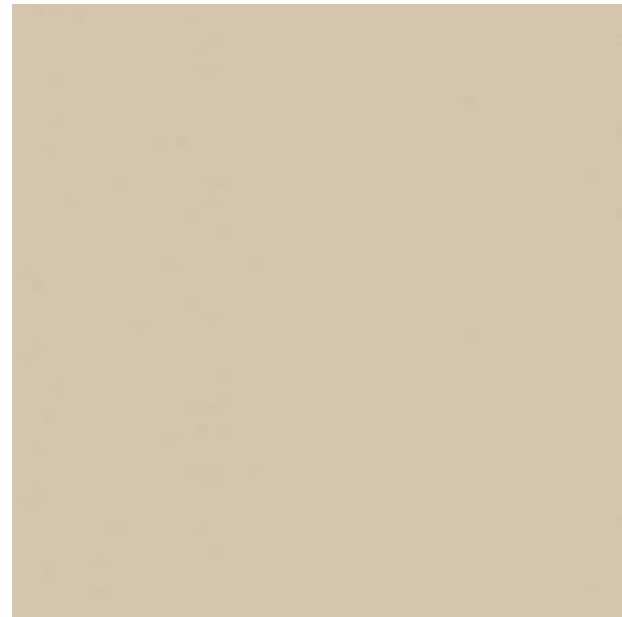
MONOCALIBER AND FULLY MODULAR FOR ALL SIZES [2mm joint]
 MONOCALIBRE E TOTALMENTE MODULAR PARA TODOS OS FORMATOS [2mm joint]

MONOCALIBER AND FULLY MODULAR FOR ALL SIZES [2mm joint]
 MONOCALIBRE E TOTALMENTE MODULAR PARA TODOS OS FORMATOS [2mm joint]

SOLID BEIGE

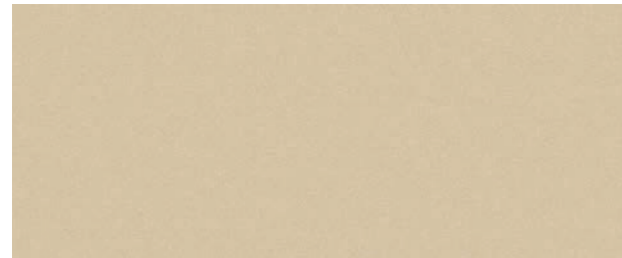
10,8mm

89X89cm 35"X35"



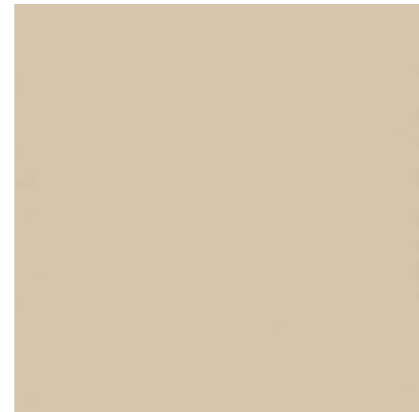
MATT | MATE [R9A] - FM524MT
CEMENT | CIMENTO [R10A] - FM537CM
STONE | PIERRE | PEDRA [R12C] - FM532ST

29,7X89cm 12"X35"



MATT | MATE [R9A] - FM526MT
CEMENT | CIMENTO [R10A] - FM539CM
STONE | PIERRE | PEDRA [R12C] - FM2561ST

59,7X59,7cm 24"X24"



MATT | MATE [R9A] - FM527MT
CEMENT | CIMENTO [R10A] - FM540CM
STONE | PIERRE | PEDRA [R12C] - FM534ST

29,7X59,7cm 12"X24"

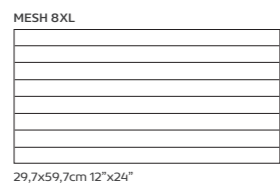
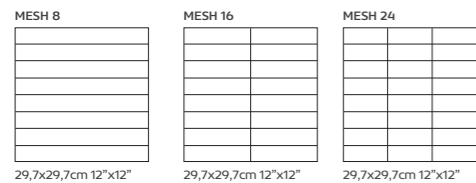


MATT | MATE [R9A] - FM2224MT
CEMENT | CIMENTO [R10A] - FM2223CM
STONE | PIERRE | PEDRA [R12C] - FM2222ST

9,7X9,7cm 4"X4"



MATT | MATE [R9A] - FM531MT
CEMENT | CIMENTO [R10A] - FM543CM
STONE | PIERRE | PEDRA [R12C] - FM536ST



MONOCALIBER AND FULLY MODULAR FOR ALL SIZES [2mm joint]
 MONOCALIBRE E TOTALMENTE MODULAR PARA TODOS OS FORMATOS [2mm joint]

SOLID TAUPE

10,8mm

89X89cm 35"X35"



MATT | MATE [R9A] - FM544MT
CEMENT | CIMENTO [R10A] - FM559CM
STONE | PIERRE | PEDRA [R12C] - FM552ST

29,7X89cm 12"X35"



MATT | MATE [R9A] - FM546MT
CEMENT | CIMENTO [R10A] - FM561CM
STONE | PIERRE | PEDRA [R12C] - FM554ST

59,7X59,7cm 24"X24"



MATT | MATE [R9A] - FM547MT
CEMENT | CIMENTO [R10A] - FM562CM
STONE | PIERRE | PEDRA [R12C] - FM555ST

29,7X59,7cm 12"X24"

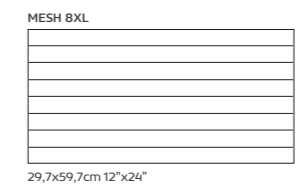
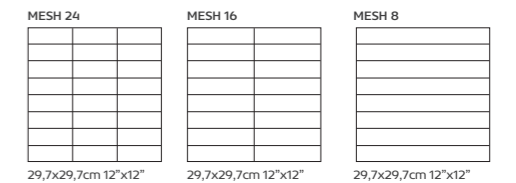


MATT | MATE [R9A] - FM2235MT
CEMENT | CIMENTO [R10A] - FM2237CM
STONE | PIERRE | PEDRA [R12C] - FM2234ST

9,7X9,7cm 4"X4"



MATT | MATE [R9A] - FM551MT
CEMENT | CIMENTO [R10A] - FM566CM
STONE | PIERRE | PEDRA [R12C] - FM558ST

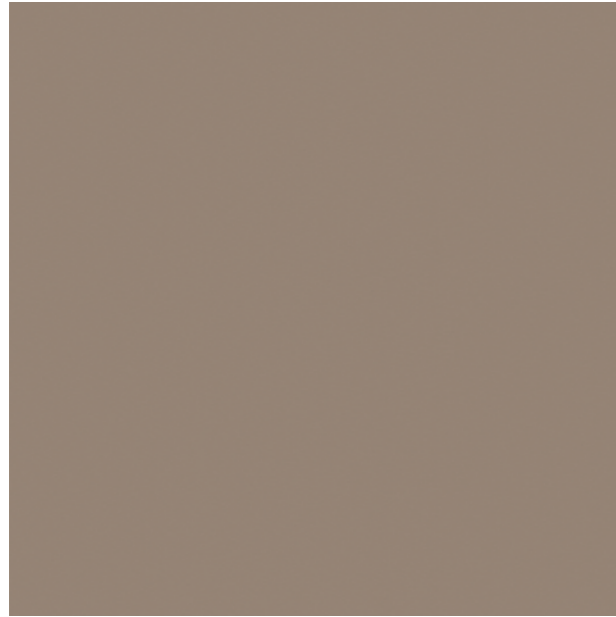


MONOCALIBER AND FULLY MODULAR FOR ALL SIZES [2mm joint]
 MONOCALIBRE E TOTALMENTE MODULAR PARA TODOS OS FORMATOS [2mm joint]

SOLID KHAKI

10,8mm

89X89cm 35"X35"



MATT | MATE [R9A] - FM567MT
CEMENT | CIMENTO [R10A] - FM581CM
STONE | PIERRE | PEDRA [R12C] - FM575ST

29,7X89cm 12"X35"



MATT | MATE [R9A] - FM569MT
CEMENT | CIMENTO [R10A] - FM583CM
STONE | PIERRE | PEDRA [R12C] - FM577ST

59,7X59,7cm 24"X24"



MATT | MATE [R9A] - FM570MT
CEMENT | CIMENTO [R10A] - FM584CM
STONE | PIERRE | PEDRA [R12C] - FM578ST

29,7X59,7cm 12"X24"

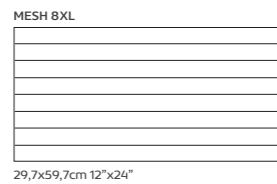
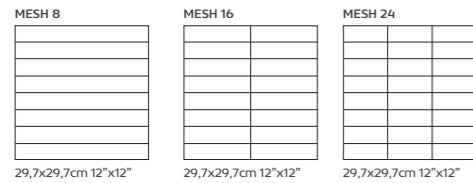


MATT | MATE [R9A] - FM2212MT
CEMENT | CIMENTO [R10A] - FM2214CM
STONE | PIERRE | PEDRA [R12C] - FM2221ST

9,7X9,7cm 4"X4"



MATT | MATE [R9A] - FM574MT
CEMENT | CIMENTO [R10A] - FM586CM
STONE | PIERRE | PEDRA [R12C] - FM580ST

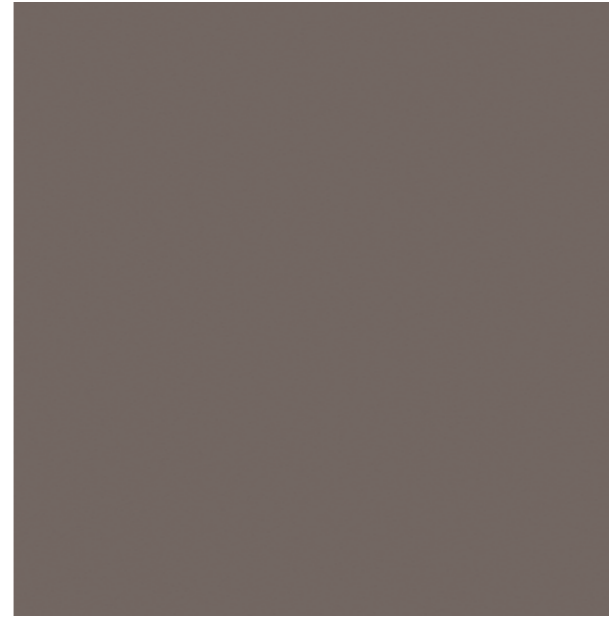


MONOCALIBER AND FULLY MODULAR FOR ALL SIZES [2mm joint]
 MONOCALIBRE E TOTALMENTE MODULAR PARA TODOS OS FORMATOS [2mm joint]

SOLID BROWN

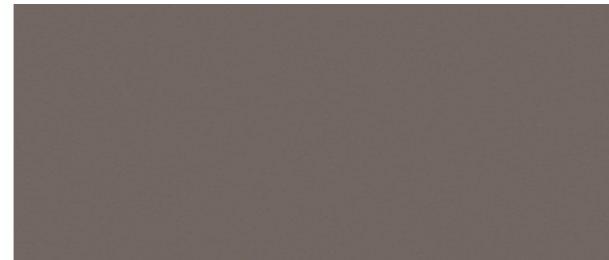
10,8mm

89X89cm 35"X35"



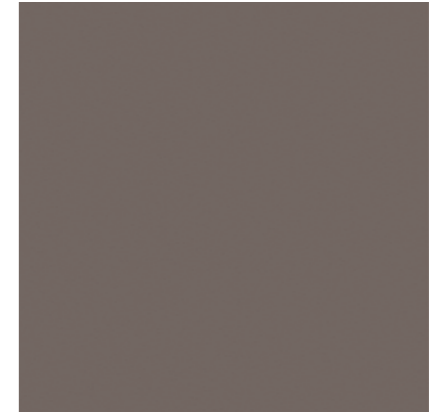
MATT | MATE [R9A] - FM587MT
CEMENT | CIMENTO [R10A] - FM601CM
STONE | PIERRE | PEDRA [R12C] - FM595ST

29,7X89cm 12"X35"



MATT | MATE [R9A] - FM589MT
CEMENT | CIMENTO [R10A] - FM2806CM
STONE | PIERRE | PEDRA [R12C] - FM597ST

59,7X59,7cm 24"X24"



MATT | MATE [R9A] - FM590MT
CEMENT | CIMENTO [R10A] - FM603CM
STONE | PIERRE | PEDRA [R12C] - FM598ST

29,7X59,7cm 12"X24"

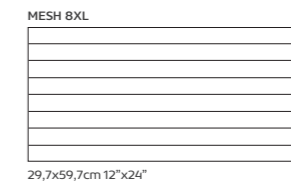
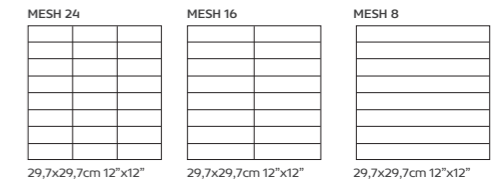


MATT | MATE [R9A] - FM2247MT
CEMENT | CIMENTO [R10A] - FM2248CM
STONE | PIERRE | PEDRA [R12C] - FM2215ST

9,7X9,7cm 4"X4"



MATT | MATE [R9A] - FM594MT
CEMENT | CIMENTO [R10A] - FM606CM
STONE | PIERRE | PEDRA [R12C] - FM600ST



MONOCALIBER AND FULLY MODULAR FOR ALL SIZES [2mm joint]
 MONOCALIBRE E TOTALMENTE MODULAR PARA TODOS OS FORMATOS [2mm joint]

SOLIDCOLLECTION

TECHNICAL FEATURES

MATERIAL:

UNGLAZED DOUBLE-LOADED PORCELAIN STONEWARE

PRODUCTION:

DOUBLE-LOADING TECHNOLOGY WITH POWDER HOMOGENIZATION AND HIGH GRANULOMETRY REDUCTION [$\leq 150 \mu\text{m}$]

HYDRAULIC ISOSTATIC VERTICAL PRESSING [$\geq 500\text{Kg/cm}^2$]

SINGLE FIRING WITH EXTRA LONG CYCLE AND HIGH TEMPERATURE [1220-1230 °C]

AUTOMATIC SQUARING AND RECTIFYING OPERATIONS FOR ALL PIECES

TECHNICAL FEATURES: DADOS TÉCNICOS:	STANDARDS NORMAS	STANDARDS SPECIFICATIONS VALORES DA NORMA	SOLID COLLECTION AVERAGE VALUES VALORES MÉDIOS
LENGTH AND WIDTH TOLERANCE DESVIO MÁXIMO PARA COMPRIMENTO E LARGURA		$\pm 0,6 \%$	$\pm 0,3 \%$
THICKNESS TOLERANCE DESVIO MÁXIMO PARA ESPESSURA		$\pm 5 \%$	$\pm 3 \%$
STRAIGHTNESS OF SIDES TOLERANCE DESVIO MÁXIMO DA RECTILINEARIDADE	ISO 10545-2	$\pm 0,5 \%$	$\pm 0,3 \%$
RECTANGULARITY TOLERANCE DESVIO MÁXIMO ORTOGONALIDADE		$\pm 0,5 \%$	$\pm 0,3 \%$
FLATNESS TOLERANCE DESVIO MÁXIMO PLANARIDADE		$\pm 0,5 \%$	$\pm 0,3 \%$
WATER ABSORPTION ABSORÇÃO DE ÁGUA	ISO 10545-3	$\leq 0,5 \%$	$< 0,1 \%$
MODULUS OF RUPTURE MÓDULO DE RUPTURA		$\geq 35 \text{ N/mm}^2$	$\geq 45 \text{ N/mm}^2$
	ISO 10545-4		
BREAKING STRENGTH FORÇA DE RUPTURA		$\geq 1300 \text{ N}$	$\geq 2500 \text{ N}$
DEEP ABRASION RESISTANCE RESISTÊNCIA À ABRASÃO PROFUNDA	ISO 10545-6	$\leq 175 \text{ mm}^3$	$\leq 130 \text{ mm}^3$
LINEAR THERMAL EXPANSION DILATAÇÃO TÉRMICA LINEAR	ISO 10545-8	DECLARED VALUE VALOR DECLARADO	$\leq 7 \times 10^{-6} / \text{K}^1$
THERMAL SHOCK RESISTANCE RESISTÊNCIA AO CHOQUE TÉRMICO	ISO 10545-9	ORDERED REQUERIDA	RESISTANT RESISTENTE
FROST RESISTANCE RESISTÊNCIA AO GELO	ISO 10545-12	ORDERED REQUERIDA	RESISTANT RESISTENTE
RESISTANCE TO CHEMICALS (ACIDS AND ALKALIS) RESISTÊNCIA AOS QUÍMICOS (ÁCIDOS E BASES)		DECLARED VALUE VALOR DECLARADO	CLASS LA CLASSE LA
	ISO 10545-13		
RESISTANCE TO CHEMICALS (HOUSEHOLD CHEMICALS & SWIMMING POOL ADDITIVES) RESISTÊNCIA AOS QUÍMICOS (PRODUTOS QUÍMICOS DOMÉSTICOS E ADITIVOS PARA ÁGUA DE PISCINAS)		MINIMUM CLASS B MÍNIMO CLASSE B	CLASS A CLASSE A
STAIN RESISTANCE RESISTÊNCIA À MANCHA	ISO 10545-14	DECLARED VALUE VALOR DECLARADO	5

SLIP RESISTANCE

RESISTÊNCIA AO ESCORREGAMENTO

DIN 51097

CLASS A $\geq 12^\circ$
CLASS B $\geq 18^\circ$
CLASS C $\geq 24^\circ$

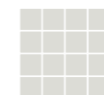
A **MT** MATT
NATURAL
A **CM** CEMENT
CIMENTO
C **ST** STONE
PEDRA

DIN 51130

MIN R9 $6^\circ - 10^\circ$
MIN R10 $10^\circ - 19^\circ$
MIN R11 $19^\circ - 27^\circ$
MIN R12 $27^\circ - 35^\circ$
MIN R13 $> 35^\circ$

R9 **MT** MATT
NATURAL
R10 **CM** CEMENT
CIMENTO
R12 **ST** STONE
PEDRA

V1



UNIFORM APPEARANCE
APARÊNCIA UNIFORME

UPEC: THE "PURE" PRODUCTS MADE BY FERRI & MASI ARE CERTIFIED BY CSTB UNDER THE NF029. THE UPEC CERTIFICATION CAN BE FOUND ON WWW.CSTB.FR

OS PRODUTOS "PURE" FABRICADOS PELA FERRI & MASI ESTÃO CERTIFICADOS PELO CSTB SOB O NÚMERO NF029. A CERTIFICAÇÃO UPEC PODE SER ENCONTRADA EM WWW.CSTB.FR



SOLID GREIGE 59,7X59,7cm
[MATT R9A]

SOLID GREIGE 29,7X59,7cm
[MATT R9A]



COEXISTENCE

Sustainability is the capacity for Nature and the human civilization to co-exist in a continuous way.

Sustentabilidade é a capacidade da Natureza e da civilização humana coexistirem de forma contínua.

OUR MISSION

To create and produce ceramic wall and floor coverings that reinforces the prestige and confidence of PAVIGRES in the global market, ensuring the sustainability and development of the Group.

Criar e produzir pavimento e revestimento cerâmico que reforce o prestígio e confiança da PAVIGRES no mercado global, assegurando a sustentabilidade e desenvolvimento do Grupo.

PAVIGRÉS[®]
GRUPO

ENVIRONMENTAL PROTECTION



The company adopts an approach to protect the environment and prevent pollution, both in terms of production processes and products, trying to reduce the consumption of resources. Raw materials, energy and water are vital components of all processes.

A empresa adota uma abordagem de proteção do ambiente e prevenção da poluição, tanto ao nível dos processos de produção como dos produtos, tentando reduzir o consumo de recursos. Matérias-primas, energia e água são componentes vitais de todos os processos.



The water treated at the WWTP (industrial wastewater treatment plant), almost 50% is recirculated for the manufacturing process.

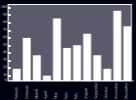
Das águas tratadas na ETARI (estação de tratamento de águas residuais industriais), quase 50% é recirculada para o processo de fabrico.



Pavigrés reuses a series of residues and by-products inherent to its manufacturing process such as dedusting powder and raw broken tiles.

A Pavigrés reutiliza uma série de resíduos e subprodutos inerentes ao seu processo de fabrico como o pó de despoiramentos e o caco crú.

ENERGY EFFICIENCY ACTIONS



Continuous improvement is a priority in the areas of efficient energy use, energy efficiency projects, assessment of opportunities, development and application of energy policies and reduction of greenhouse gas emissions.

A melhoria contínua é uma prioridade nas áreas do uso eficiente de energia, projetos de eficiência energética, avaliação de oportunidades, desenvolvimento e aplicação de políticas energéticas e redução de emissões de gases de efeito estufa.



Hot air recovering from the cooling zone of the ovens for other processes such as drying and atomization

Recuperação do ar quente proveniente da zona de arrefecimento dos fornos para outros processos como a secagem e atomização



Investment in clean energy with the installation of 2222 photovoltaic panels at the Cerev Production Unit. With an installed capacity of 1 Mwp for an annual production capacity of 1392 Mwh / Year, the result is a significant impact on the reduction of consumption (13%).

Investimento em energia não poluente com a instalação de 2222 painéis fotovoltaicos na Unidade de Produção Cerev. Com uma potência instalada de 1 Mwp para uma capacidade produtiva anual de 1392 Mwh, o resultado directo é um impacto significativo na redução do consumo (13%).

Indirectly, 350 tonnes of CO2 / year will no longer be emitted due to reduced energy needs.

Indirectamente, deixarão de ser emitidas menos 350 Toneladas de CO2/ ano pela redução das necessidades energéticas.

QUALITY & SAFETYMANAGMENT



Protection of the environment, reduction of waste production, efficient use of natural resources and reduction of environmental risks. The activities related to the activities of monitoring and operational control of its aspects and environmental impacts are managed according to the environmental management system.

A proteção do meio ambiente, diminuição da produção de resíduos, uso eficiente de recursos naturais e a diminuição de riscos ambientais. As atividades relacionadas com as actividades de monitorização e controlo operacional dos seus aspetos e impactos ambientais são geridos de acordo com o sistema de gestão ambiental.



Samples and analyzes are carried out in the area of health and safety of employees, as well as the safety of working conditions. Existing and potential risks are assessed and measures are taken to reduce them.

São realizadas amostragens e análises da área da saúde e segurança dos funcionários, bem como à segurança das condições de trabalho. Os riscos existentes e potenciais são avaliados e implementadas medidas para a sua redução.

PRODUCT ENVIRONMENTAL DECLARATIONS | DECLARAÇÕES AMBIENTAIS DE PRODUTO



Número de registos:
DAP 002 / 003 / 004:2019

Número de registos:
00000878 / 879 / 880

HOMOGENEOUS TECHNICAL PORCELAIN TILES
GRÉS CÉRAME TECHNIQUE



GLAZED VITRIFIED TILES
GRÉS ÉMAILLÉ



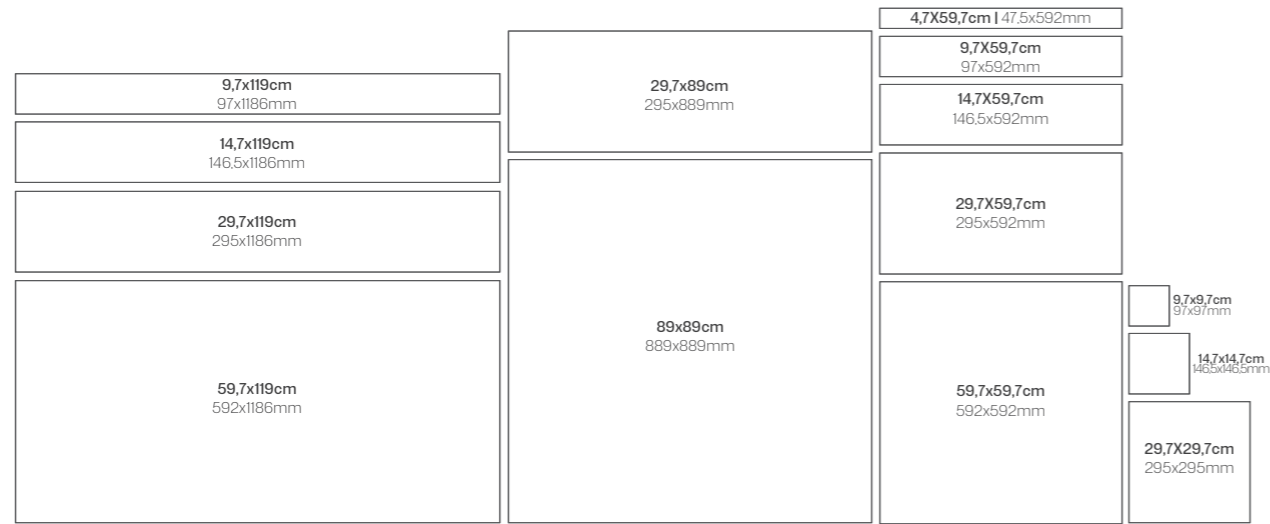
UNICOLOR GLOSSY WALL TILES
FAIENÇE UNI BRILLANTE



Pavigrés Environmental management is based on ISO 14001: 2015 on environmental management systems, on a principle of continuous improvement of environmental performance

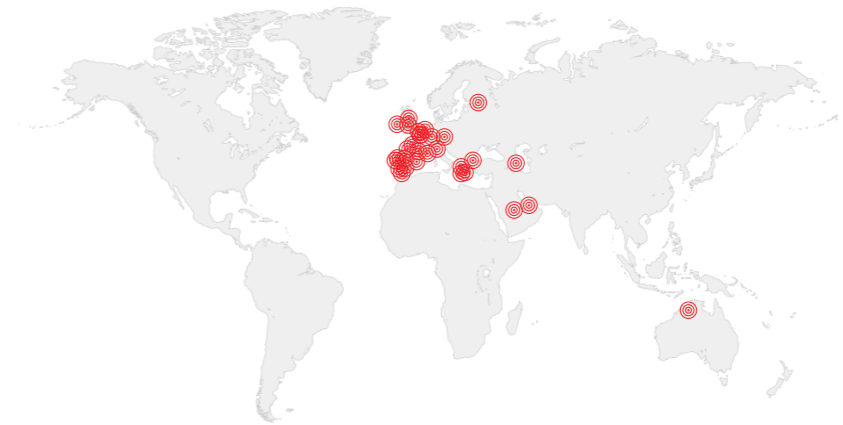
A gestão ambiental Pavigrés baseia-se na norma ISO 14001:2015 sobre sistemas de gestão ambiental, num princípio de melhoria contínua do desempenho ambiental.

MODULARITY

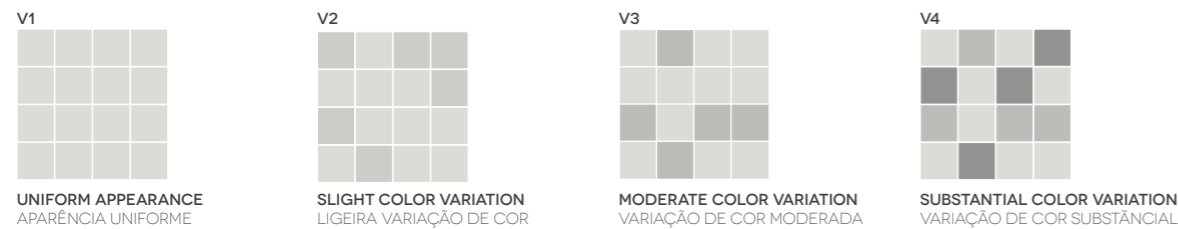


MONOCALIBRE AND FULLY MODULAR FOR ALL SIZES (2mm joint)
 MONOCALIBRE E TOTALMENTE MODULARES PARA TODOS OS FORMATOS (junta de 2mm)

REFERENCE WORKS



SHADE VARIATION COLOR GUIDE



The variants to which the production process is exposed can cause slight variations on shade to the fixed standard colours.
 The Pavigrés has right to change or eliminate, total or partially, any reference or technical specification mentioned in this catalogue.
 Printed colours in this catalogue are for guidance purposes only.

As variantes a que o processo de produção de cerâmica está sujeito podem provocar ligeiras variações de tonalidade em relação ao padrão de cor estabelecido.
 A Pavigrés reserva-se o direito de alterar ou eliminar, total ou parcialmente, qualquer referência ou especificação técnica contida neste catálogo.
 As cores impressas neste catálogo são apenas indicativas.

REFERENCE WORKS

REFERENCE WORKS

- JOHN LENNON AIRPORT**
Liverpool, UK
- CORESI SHOPPING CENTER**
Brasov, Romania
- UP-SITE TOWER**
Brussels, Belgium
- HOTEL MELIÁ**
Dusseldorf, Germany
- MAR SHOPPING**
Matosinhos, Portugal
- CENTRAL NAVAL MUSEUM**
Saint Petersburg, Russia
- IPO – PORTUGUESE INSTITUTE OF ONCOLOGY**
Porto, Portugal
- PORTAVENTURA PARK**
Salou, Spain
- HSBC BANK**
Dublin, Ireland
- PORT DU BON DIEU**
Namur, Belgium
- LONGEVITY WELLNESS RESORT**
Monchique, Portugal
- RIYAD BANK**
Riyadh, Saudi Arabia
- GRANDE HOTEL DO LUSO**
Luso, Portugal
- BMW SHOWROOM**
Genk, Belgium
- SALSA STORES**
Portugal
- BMW MOTO SALES STAND**
Athens, Greece
- EVER – WR HOTEL**
São João da Madeira, Portugal
- 87 SOLIGNY RESIDENCES**
Cannes, France
- CROWNE PLAZA HOTEL**
Manchester, UK
- BOHO HOTEL**
Prague, Czech Republic
- RADISSON BLU HOTEL**
Dubai, United Arab Emirates
- WIMBLEDON TENNIS COURTS**
Wimbledon, UK

- AVENIDA PALACE HOTEL**
Barcelona, Spain
- BRAVO SUPERMARKET**
Azerbaijan
- FANPRIX SUPERMARKETS**
France
- LOUISE METRO STATION**
Belgium
- MARKS & SPENCER STORES**
UK
- RENFE TRAIN STATIONS**
Spain
- VODAFONE STORES**
Netherlands
- FÓRUM BARREIRO SHOPPING CENTER**
Portugal
- CAMPERA OUTLET SHOPPING**
Portugal
- PALÁCIO DO GELO SHOPPING CENTER**
Portugal
- ANEMONY SHOPS**
Greece
- LARUS – URBAN DESIGN COMPANY**
Portugal
- CAJASOL BANK BRANCHES**
Spain
- HOTEL S. PEDRO**
Portugal
- MATER CHRISTI PRIMARY SCHOOL**
Belgium
- HORTIS RESIDENCES**
Luxembourg
- NANDO'S RESTAURANTS**
UK
- ST. DAVIDS HOTEL – CARDIFF**
UK
- CARTIER STORE**
Casablanca
- IBIS PORTLAND HOTEL**
Manchester, UK
- ISPAK – ADMINISTRATION – BUILDING**
Istanbul, Turkey
- LATYMER UPPER SCHOOL**
London, UK

- EAST KILBRIDE SHOPPING CENTER**
Glasgow, Scotland
- NATIONAL PIPING CENTER – MUSIC CENTER**
Glasgow, Scotland
- ORLEBAR BROWN – MENS FASHION CHAIN**
Glasgow, Scotland
- VICTORIA GATE SHOPPING CENTER**
Leeds, UK
- STARBUCKS**
Telford, Glasgow, Cardiff, Brents, Milton Keys, Keele, UK
- GOURMET BURGER KITCHEN RESTAURANTS**
Resorts World, Birmingham, UK
- HUNTINGDON CAR PARK**
Huntingdon, UK
- ST. NICHOLAS PARK LEISURE CENTRE**
Warwick, UK
- H&M – FASHION CHAIN**
Exeter, UK
- ALOFT LONDON EXCEL**
London, UK
- MILLENIUM CRUISE SHIP**
- SENATE HOUSE – UNIVERSITY**
London, UK
- AVERY HEALTHCARE – RETIREMENT HOME**
Northampton, UK
- NANDOS**
Warrington, Cambridge, Lewisham, UK
- HEXHAM BUS STATION**
Hexham, UK
- NOVOTEL**
Canary Wharf, London, UK
- GAUCHO RESTAURANTS**
Picadilly, London, UK
- THAMES TOWER – OFFICES**
Reading, UK
- CHARTER PLACE SHOPPING CENTER**
Watford, London, UK
- BIRMINGHAM CHILDRENS HOSPITAL**
Birmingham, UK
- WELLINGTON PLACE – OFFICES**
Leeds, UK
- EXCHANGE HOUSE OFFICES**
Milton Keynes, UK

- BLACKBROOK LEISURE CENTRE & SPA**
Tauton, UK
- FINLAKE HOLIDAY PARKS**
Chudleigh, UK
- CITY OF LONDON FREEMENS SCHOOL SWIMMING POOL**
London, UK
- ARNDALE SHOPPING CENTER**
Manchester, UK
- BOROUGHMUIR HIGH SCHOOL**
Edinburgh, Scotland
- PERLE OBAN HOTEL**
Oban, Scotland
- QUEEN ELIZABETH UNIVERSITY HOSPITAL**
Glasgow, Scotland
- TINY REBEL BREWING COMPANY – BREWERY**
Newport, South Wales, UK
- HOTELL ÄLVSJÖ**
Stockholm, Sweden
- Nº 1 & 2, 47 BELGRAVE SQUARE – RESIDENCES**
Belgravia, London, UK
- WHITECHAPEL**
London, UK
- SOUTHGATE – RESIDENCES**
London, UK
- HG-GLASINDUSTRIE COMPANY**
Belgium
- CARTIER STORE**
Casablanca
- IBIS PORTLAND HOTEL**
Manchester, UK
- ST. DAVIDS HOTEL**
Cardiff, UK
- NANDO'S RESTAURANTS**
UK
- BRAVO SUPERMARKETS**
Azerbaijan
- LUX AIR FACILITIES**
Luxembourg
- ROD LAVER ARENA**
Melbourne, Australia
- UPS FACILITIES**
Lummen, Belgium
- NORTHAMPTON BOYS SCHOOL**
Northampton, UK



Reference Projects

PAVIGRÉS[®]

GRUPO

SEDE:

Apartado 42 | EC Anadia
3781-909 ANADIA - PORTUGAL

Tel: +351 231 510 600 • fax: +351 231 504 143

export@pavigres.com

External market . Marché extérieur . Mercado externo
comercial@pavigres.com

Internal market . Marché interne . Mercado interno

Gps: N 40 25.333 W 8 26.052
Z.I. Almas das Domingas • 3780-244 ANADIA

DELEGAÇÃO:

Lisboa
Empreendimento Portucalle - Lote 4.42.01
Pátio Das Pirogas - Loja 33 - Bl. C3 - Piso 0
1990-616 Lisboa

Tel: +351 218 960 110/1 • Fax: +351 218 960 112
delegacao.lisboa@pavigres.com

Gps: N 38 46.616 W 9 05.711



CATÁLOGO PURE 2022

Ed.07/2021

Pavigrés Cerâmicas S.A.

Concept Design: Paulo Lima

Printed by: Joartes